



# TRENCH SHIELD TECHNICAL DATA SHEET

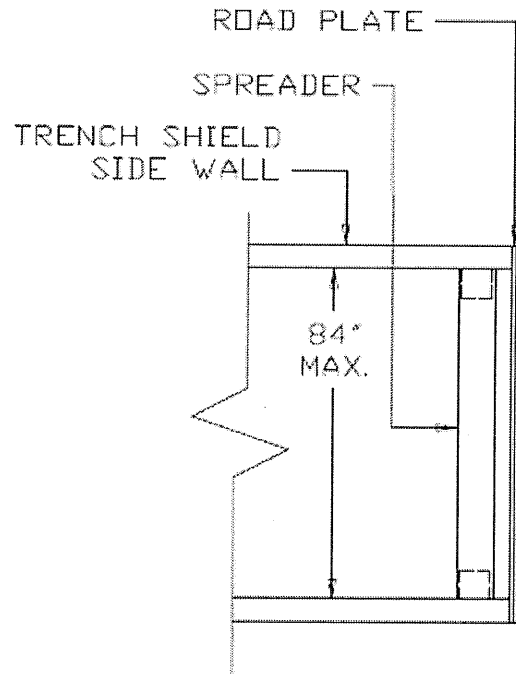
DATE: December 3, 2010  
 SUBJECT: Plate End Loading Protection

This Technical Data Sheet is a addition to Pro-Tec's Tabulated Data for Trench Shields

**General Notes:**

Road Plate may be utilized to create end protection for Pro-Tec Trench Shields provided that the following conditions are met:

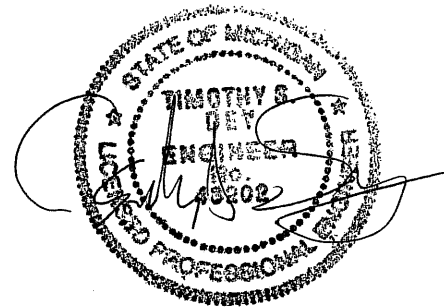
1. The Road Plate bears against the end of the walls of the Trench Shield perpendicular to it and does **not** bear against the spreader pipes and has a maximum clearspan width of **84-inches** as shown in Fig.(1.1).
2. The Road Plate is securely fastened to the Trench Shield and is backfilled against at least 2/3 of its height to prevent lateral movement.
3. The Road Plate shall have a minimum yield strength of **Fy = 36 ksi**.
4. The excavation depth shall not exceed the values as indicated in the Trench Shields Tabulated Data.
5. The maximum excavation depth and required Road Plate thickness values, as indicated in the following table, shall not be exceeded.



**TOP VIEW  
FIG (1.1)**

PLATE THICKNESS	MAXIMUM DEPTH (FT)			
	A25	B45	C60	C80
3/4 - IN	20	12	9	7
1 - IN	20	20	16	12
1 1/4 - IN	20	20	20	19
1 1/2 - IN	20	20	20	20

See Pro-Tec's Tabulated data for Trench Shields for soil type definitions.



DEC 03 2010



Pro - Tec Equipment  
 1298 Lipsey Drive  
 Charlotte, MI 48813  
 Phone 517 - 541 - 0303