

PRODUCT CATALOG



**VEHICLES • TENTS • FALL PROTECTION
VENTILATION • MANHOLE EQUIPMENT**



FIBERLITE® XL GRIZZLY™
TRAILER

TRADITION AND



**Permanent Davit Fall
Protection System**
DK1824, DSP-F1 base and
WH07C Equipment Hoist

INNOVATION

Table Of Contents

| | |
|---|-----------|
| COMMITMENT TO QUALITY | 5 |
| VEHICLES..... | 6 |
| Fiber Splicing Vehicles..... | 7 |
| FiberLite® XL Grizzly..... | 7 |
| FiberLite® XL Tradesman™ | 9 |
| FiberLite® Pod Tradesman™ | 11 |
| FiberLite® Pod vs XL Dimensions Comparison..... | 13 |
| Fiber Optic Splicing Trailer (F.O.S.T.)..... | 15 |
| Fiber Splicing High Cube | 17 |
| Fiber Splicing Van..... | 19 |
| Fiber Splicing Truck Insert..... | 21 |
| Utility Support Vehicles | 22 |
| Utility Support Trailer | 22 |
| Utility Support Truck..... | 23 |
| High Roof Van Series | 25 |
| Vehicle Customization | 27 |
| Custom Trailers..... | 28 |
| Custom Bodies..... | 28 |
| Vehicle Accessories..... | 29 |
| TENTS..... | 30 |
| Tent Set-Up | 31 |
| Standard Series | 32 |
| Interlocking Series..... | 33 |
| Dual-Entry Series | 34 |
| SolarShade® Series..... | 35 |
| SolarShade® Fiber Splicing Tent..... | 35 |
| SolarShade® Work Shelter | 36 |
| SolarShade® Umbrella Series | 37 |
| All-Weather Series | 38 |
| All-Weather Fiber Splicing Tent | 38 |
| All-Weather Fiber To The Home | 39 |
| All-Weather Multi-Tent | 40 |
| Trench Series | 41 |
| High-Rise Series..... | 42 |
| Tent Customization | 43 |
| FALL PROTECTION | 44 |
| LifeGuard System..... | 45 |
| Davit System | 47 |
| Permanent Base Systems | 47 |
| Complete Arms | 48 |
| Individual Parts | 48 |
| Permanent Mount Sleeves | 49 |
| Portable Base Systems..... | 51 |
| Vehicle Hitch Mount Systems | 52 |

Table Of Contents

| | |
|---|-----------|
| Fall Arrest Post Systems | 53 |
| Uni-Lite Portable Fall Arrest Post | 53 |
| Uni-Lite Post Accessories | 54 |
| Expandable Fall Arrest Post | 55 |
| Pole Hoists | 55 |
| Post Base Plates | 56 |
| Rescue Tripod | 57 |
| Hoists | 58 |
| Personnel Hoists | 58 |
| Quick Rescue Hoists | 59 |
| Equipment Hoists | 59 |
| Standard Self-Retracting Lifelines (SRLs) | 60 |
| 3-Way Self-Retracting Lifelines (SRLs) | 61 |
| Hoist Adapter Brackets | 62 |
| Rescue Pole | 63 |
| Safety Accessories & Harnesses | 63 |
| VENTILATION | 64 |
| Blowers & Ventilators | 65 |
| Axial Blowers | 65 |
| Super Axial Ventilators | 67 |
| Centrifugal Blowers & Ventilators | 68 |
| Heaters | 70 |
| Tent Heaters | 71 |
| Heater Accessories | 72 |
| Cooling | 73 |
| Blower Hoses/ Ducts | 74 |
| Axial Spiral Ducts | 76 |
| Ventilation Accessories | 76 |
| Cable Drying Windbag | 77 |
| Hazardous Location Basics | 78 |
| MANHOLE EQUIPMENT | 80 |
| Gas Monitor | 81 |
| Gas Monitor Accessories | 82 |
| Aluminum Manhole Shields | 83 |
| Manhole Cover Lifters, Guards & Planks | 84 |
| Work Lamps | 85 |
| Pumps & Accessories | 86 |
| Submersible Pumps | 86 |
| Centrifugal Pumps | 87 |
| Discharge Hoses | 87 |
| Duct Rodders | 88 |
| Duct Rodder Accessories | 89 |
| COMMITMENT TO CUSTOMER CARE | 90 |

Commitment to Quality

Since 1963, Pelsue has been enabling safe and productive work environments throughout the world. With a strong tradition of service, quality, and value, Pelsue is an industry leader in the design and manufacture of customized solutions for telecommunications, utilities, and other industries.

At Pelsue our commitment to quality is unrelenting. As a manufacturer of vehicles and equipment trusted by the military, the Department of Defense, utility and communication companies, and search and rescue organizations, quality isn't a talking point—it's our standard.

We will continue to support total customer satisfaction by maintaining our ISO 9001:2015 Quality Management System, and by promoting a customer focused culture.

We make every business decision as though the part or service provided was destined for our own family's use.

Warranty

At Pelsue, we stand behind our products. While our products are built to last, we also stand by them with a competitive warranty should the unfortunate happen. Products are warranted individually—please contact customer service with any questions.

Order Entry

All orders accepted between the hours of
7:00am - 5:00pm (MST) Monday - Friday
Please call 800-525-8460 (ext. 222)
or for international callers: +1 303.936.7432
or email: sales@pelsue.com

VEHICLES



FIBERLITE® XL GRIZZLY™
TRAILER

MADE IN

COLORADO

FIBER SPLICING VEHICLES

FIBERLITE® XL GRIZZLY™



**HEAVY-DUTY FRAME
HIGH CLEARANCE
OFF-ROAD TIRES**

**AVAILABLE IN THE
POD MODEL**

The FiberLite XL Grizzly is the off-road variation of our flagship XL trailer. When you need extra capabilities from your fiber splicing trailer, look to the FiberLite XL Grizzly. The trailer allows you to access places you normally wouldn't be able to reach with a typical trailer.

The trailer was designed to be more durable with off-road tires and wheels, a greater clearance, and heavy-duty fenders. It is built with an aluminum skid plate to protect the fuel cell when driving over rough terrain.

The FiberLite XL Grizzly offers the same functional interior of the standard XL, allowing you all the options you need to get the job done.

Specifications can be customized to meet your needs.

REV. 05.15.2020

Standard Features

- Cummins Onan gasoline genset (LPG & diesel available)
- All-aluminum heavy-duty frame construction
- Hand-laid fiberglass gel coat body with removable rubber floor mat
- Off-road tires and wheels
- 4" higher ride height
- Slider windows with screens
- 2 cable slots next to each entry door
- Tandem torsion axles, with 15" wheels and electric brakes on all 4 wheels
- 4 overhead storage cabinets
- Shore power inlet, 120/240 VAC Hubble Twist Lock to connect trailer to generator or commercial power
- 4 duplex receptacles, 120 VAC, GFI protected
- LED lights mounted under overhead cabinets
- 15,000 BTU/hr commercial grade A/C
- 120 VAC wall-mounted ventilation fan adjacent to splice area



Interior: 11' L x 6' W x 7' H

Exterior: 18' L x 8' W x 10.3' H



FIBERLITE® XL TRADESMAN™

ALUMINUM FRAME CONSTRUCTION PREMIUM CRAFTSMANSHIP FIBERGLASS BODY



Specifications can be
customized to
meet your needs.

Standard Features

- Cummins Onan gasoline genset (LPG & diesel available)
- All-aluminum frame construction
- Hand-laid fiberglass gel coat body
- Removable rubber floor mat
- Slider windows with screens
- 2 cable slots located by each entry door
- Tandem torsion axles with 15" wheels and electric brakes on all 4 wheels
- 4 overhead storage cabinets
- Shore power inlet, 120/240 VAC Hubble Twist Lock to connect trailer to generator or commercial power
- 4 duplex receptacles, 120 VAC 15-amp, GFI protected
- LED lights mounted under overhead cabinets
- 15,000 BTU/hr commercial grade A/C
- 120 VAC wall-mounted ventilation fan adjacent to splice area

REV. 05.15.2020

The FiberLite XL Tradesman is Pelsue's flagship fiber splicing trailer and is trusted by leading communication companies for their fiber splicing needs. With an all-aluminum frame construction and a hand-laid fiberglass body, the FiberLite XL Tradesman is a durable, long lasting solution for splicing cable. The interior has plenty of cabinet storage, counter space, and lighting. With a clean and smooth finish, the countertops are easy to maintain. The trailer offers both heating and cooling so you can stay comfortable no matter what the weather throws at you.



Cable Access Slot

The FiberLite XL Tradesman offers superior quality and craftsmanship providing you years of service, and can be customized to meet your needs.

Interior: 11' L x 6' W x 7' H
Exterior: 18' L x 8' W x 10' H



FIBERLITE® POD TRADESMAN™

COST-EFFECTIVE ALUMINUM FRAME CONSTRUCTION FIBERGLASS BODY

Cable Access Door
(Optional)

Specifications can be customized
to meet your needs.



Standard Features

- Cummins Onan gasoline genset (LPG & diesel available)
- All-aluminum frame construction
- Hand-laid fiberglass gel coat body with removable rubber foot mat
- Single torsion axle, 3000 lbs.
- 2 slider windows with screens
- Cable access slot
- Personnel entry door with full sized screen door
- 2 overhead storage cabinets
- Shore power inlet, 120/240 VAC Hubbell Twist Lock to connect trailer to generator or commercial power, mounted on exterior front wall with cover
- 3 duplex receptacles, 120 VAC, GFCI protected
- LED lights mounted above work area
- 15,000 BTU/hr commercial grade A/C
- 120 VAC wall-mounted ventilation fan adjacent to splice area

REV. 05.15.2020

The Pelsue FiberLite Pod Tradesman is the most compact splicing trailer available. It is made with an all-aluminum frame and fiberglass body.

The unit is versatile and packs a punch for its smaller size. The Pod includes an Onan generator and a 15,000 BTU/hr commercial grade air conditioner which is rated for off-road use.

The interior cabinets and drawers have a silver hammertone powder coat for a clean and durable finish. With two slider windows, fresh air and natural light can enter the trailer. An optional cable access door, located on the side of the trailer, allows you to bring in splice cases if you can't bring them through the rear access door.

For a smaller fiber splicing trailer, the Pelsue FiberLite Pod Tradesman is the perfect solution.

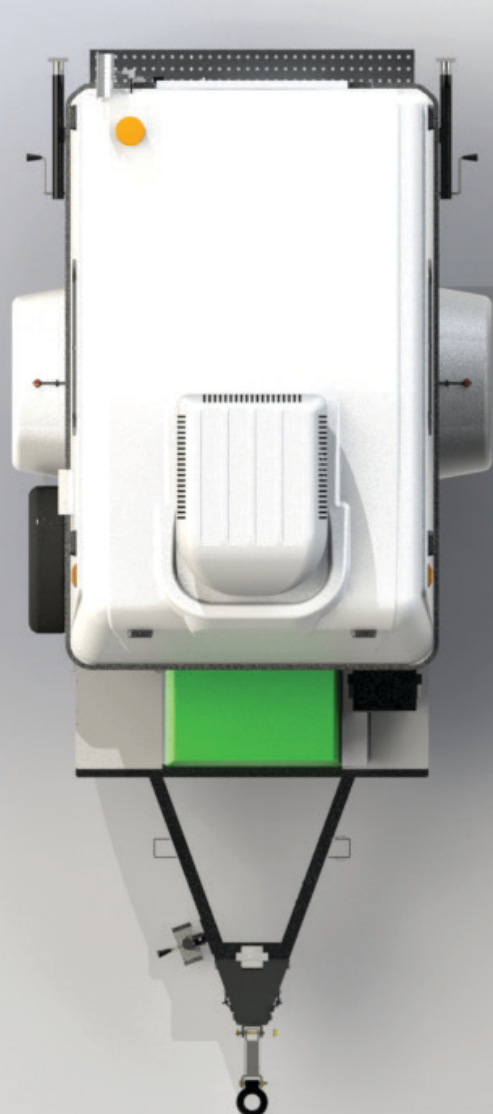
Interior: 9' L x 5.5' W x 6.5' H
Exterior: 16' L x 7.5' W x 9.5' H



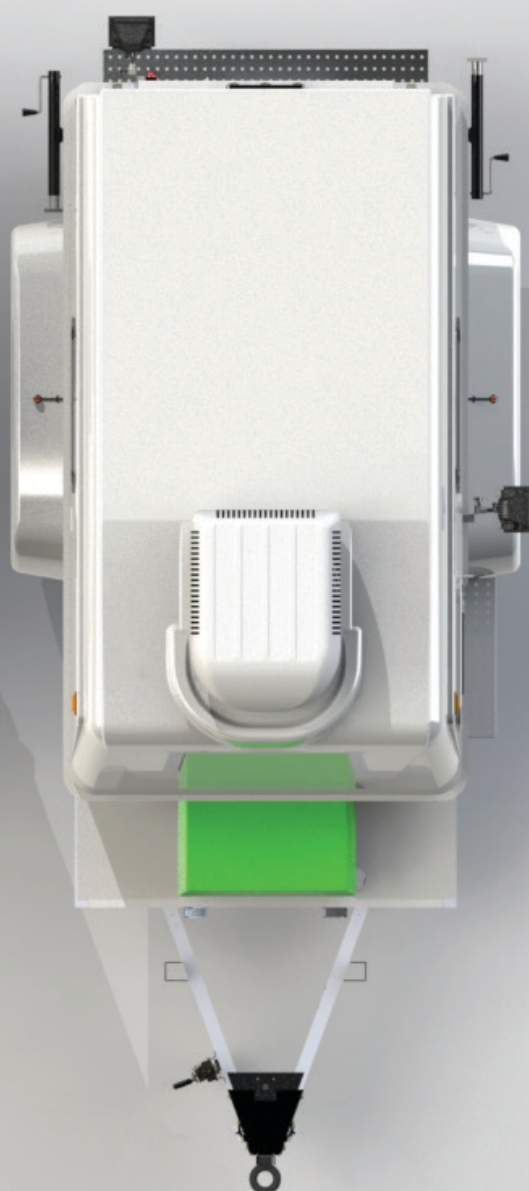
FIBERLITE® POD VS XL DIMENSIONS COMPARISON

FIBERLITE POD

FIBERLITE XL



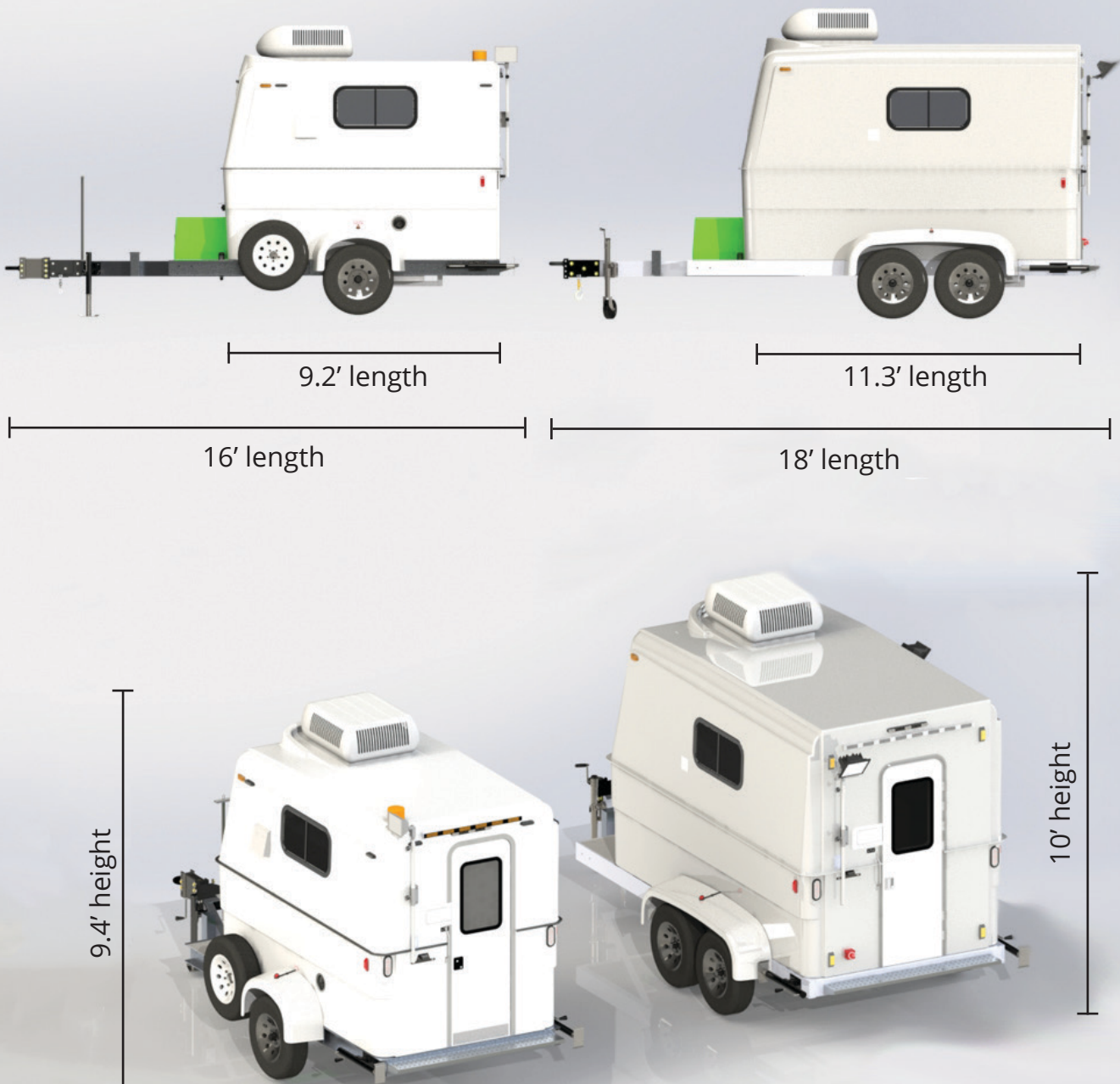
7.5' width



8' width

REV. 05.15.2020

FIBERLITE POD FIBERLITE XL



FIBER OPTIC SPLICING TRAILER (FOST)

LARGEST TRAILER IDEAL FOR MULTIPLE TECHNICIANS CROSS-AISLE COUNTER



The Pelsue FOST is our largest trailer. The trailer can comfortably support multiple technicians working at the same time. The frame is all-aluminum with a white aluminum skin on the exterior.

The interior provides ample storage, long countertops, LED lighting, and tinted sliding glass windows. The FOST also comes with a detachable cross-aisle counter for additional countertop space to work on.



When multiple technicians are needed to work together on the same project, look to the FOST to provide plenty of work space, so technicians aren't working on top of each other.

This trailer comes in lengths of 11 ft. (standard) and 13 ft. (optional).

Standard Features

- Cummins Onan gasoline genset (LPG & diesel available)
- Featherlite trailer body
- All aluminum frame construction
- White aluminum skin on exterior
- Floor of aluminum interlocking panels with center aisle covered by rubber mat
- 2 heavy-duty double seal entry doors with locking latch handles
- Tinted slider safety glass windows with screens on sides and doors
- 2 cable entry slots next to each door
- Tandem 3500 lb. torsion axles with electric brakes on all four wheels
- 15" wheel/ tire assembly
- Roof top amber strobe beacon, 120 VAC, mounted on rear street side
- Shore Power Inlet, 120/240 VAC Hubble Twist Lock to connect trailer to generator or commercial power
- 5 duplex receptacles, 120 VAC, GFI protected
- 15,000 BTU/hr commercial grade A/C
- Duplex GFCI protected 120 VAC receptacles on rear and front exterior walls with covers
- 120 VAC wall-mounted ventilation fan adjacent to work center

Specifications can be customized to meet your needs.



REV. 05.15.2020

FIBER SPLICING HIGH CUBE

ALL-IN-ONE SOLUTION NO NEED TO TOW AMPLE SPACE

Standard Features

- Cummins Onan gasoline genset (diesel available)
- All-aluminum frame construction
- Structural honeycomb panel
- 2WD or 4WD available
- LED lighting
- Overhead storage
- 15" W x 24" D cabinet
- 2 drawer modules
- Full-length countertop
- Overhead shelf storage tray
- 45" W x 40" D cabinet
- 36" W x 20" D closet with 3 shelves



Cable Entry Door



REV. 05.15.2020

The Pelsue High Cube is an all-in-one mobile fiber splicing solution. With the High Cube, you never have to worry about towing a trailer to your destination. The vehicle rapidly deploys on the job site, while providing the functionality you need from a fiber splicing vehicle. The High Cube was designed to maximize space, with multiple storage solutions and long countertops.

The vehicle has an onboard Onan Genset which can be gasoline or diesel fueled, a clean interior finish, ample storage, LED lighting, and heating and cooling so you can stay focused on the task at hand.

The High Cube is made with premium craftsmanship. It will outlast the life of the chassis, and can then be moved to a new chassis, providing considerable cost-savings.

When considering an all-in-one mobile solution, look to the High Cube to provide you everything you need to splice fiber comfortably and efficiently.

**Specifications can be customized to
meet your needs.**



FIBER SPLICING VAN

ALL-IN-ONE SOLUTION EASY TO DRIVE NO NEED TO TOW

The Pelsue Van is easy to drive and maneuver, and provides everything you need for fiber splicing. The van door slides open for effortless entry in and out of the vehicle, and provides extreme ease of use.

The Pelsue Van comes standard with overhead storage, cabinets, LED lighting, ventilation, heating, and genset power. The van is upfitted with superior craftsmanship and quality parts, so it will provide years of durable service. When needing ease of use and maneuverability, the Pelsue Van is an all-in-one solution for fiber splicing.



**For custom applications,
please see pg. 25**

REV. 05.15.2020

**Standard Features**

- Cummins Onan gasoline genset (diesel available)
- Ventilation and heating
- 120/240 VAC electricity
- LED lighting
- Strobe beacon
- Full-length countertop
- Storage compartments
- Cable access door
- 2WD or 4WD



REV. 05.15.2020

FIBER SPLICING TRUCK INSERT

COMPACT DESIGN COST-EFFECTIVE FIBERGLASS BODY

The Pelsue Truck Insert is a compact and cost-effective way to get fiber splicing capabilities from your truck. The Truck Insert includes a full-length countertop, LED lighting, a 15,000 BTU/hr commercial grade air conditioner, and cabinets and drawers for storage, as well as three GFI protected 120 VAC outlets.

The Pelsue Truck Insert is a great option for fiber splicing in tight spaces or off-road areas. It can take you wherever your truck can go.

The body will outlast the life of the chassis, and can then be moved to a new chassis, providing considerable costsavings.



Standard Features

- Cummins Onan gasoline genset (diesel available)
- 15,000 BTU/hr commercial grade A/C
- Fiberglass gel coat body
- 2 sliding windows with screens
- Power distribution panel with circuit breaker protection
- LED lighting
- Closet module on street side
- Weather resistant inlet for connecting to shore power (curb side)
- Cable entry door
- Exterior GFI protected 120 VAC outlet
- Single rear door with flush-mounted hardware and glass window
- 2 GFI protected 120 VAC duplex outlets
- Full-length countertop



SPECIAL ORDER ONLY

**Variety of optional equipment available.
Can be customized for any application.**

REV. 05.15.2020

UTILITY SUPPORT VEHICLES

UTILITY SUPPORT TRAILER

POWER ON LOCATION HIGHLY VERSATILE LARGE VARIETY OF GENSETS

The Pelsue Utility Support Trailer is an extremely versatile trailer that brings power, storage, compressed air, and ventilation to the location you need. It is a great alternative to the Utility Support Truck, and can easily be towed to the location you need.

It comes available with an LPG or diesel genset and is highly customizable. The trailer can be equipped with beacons, arrow boards, flood lights, air conditioning, and various power outputs.



**Specifications can be customized
to meet your needs.**



Available Features

- Various gensets available. Fuel choices: LPG or diesel
- Choice of traffic control arrow board, beacons, and flood lights
- Storage for manhole shields, guards, pumps, hoses
- Single 3500 lb. torsion axle
- All-aluminum frame construction
- Storage for submersible pumps
- Storage for planks and plank support
- Compressed air system with cool and dry air capability with full filtration and regulation
- Large capacity confined space ventilation blower and 25' duct. Available with hot water heat and electrical heat boost
- Air conditioning
- Various electrical outlets available for lighting, tools, submersible pump, SLC support, etc.
- 120/240 VAC, 60Hz, 1ph output, and 3ph available
- Fiberglass gel-coat body with lockable gull wing doors. Comes in white or yellow.

VEHICLES

TENTS

FALL

PROTECTION

VENTILATION

MANHOLE

EQUIPMENT

UTILITY SUPPORT TRUCK

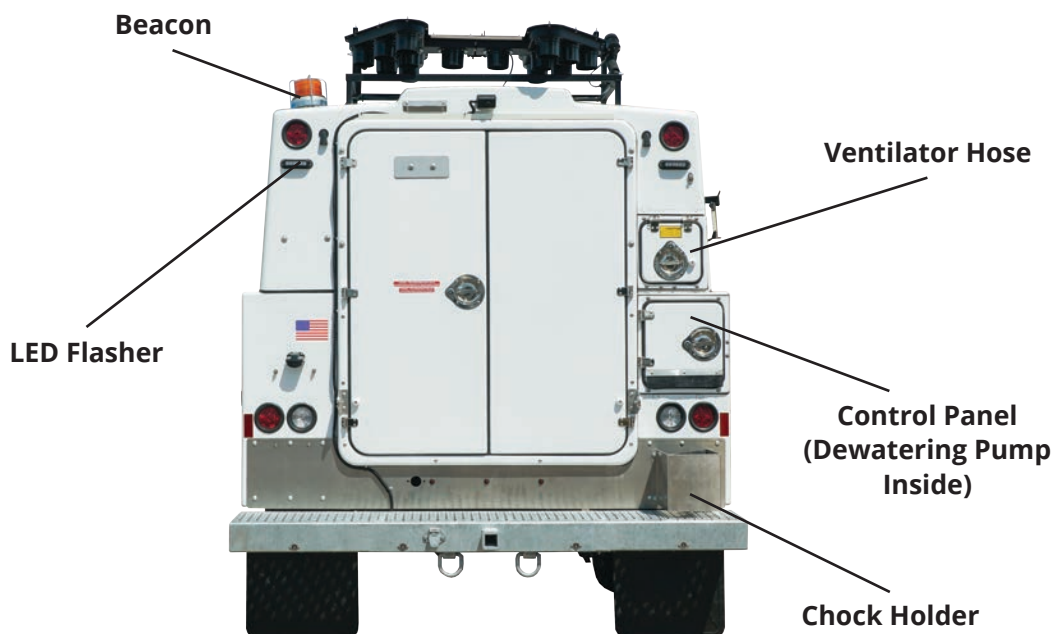
**VERSATILE
VARIETY OF OPTIONS
EXTENSIVE STORAGE**



The Pelsue Utility Support Truck is great for servicing manholes, vaults, and other confined spaces. The vehicle can be outfitted to your specifications, including a Pelsue gasoline or a Kubota diesel genset, dry air system, submersible water pump, arrowboard, 120/240 VAC electricity, strobe beacons, and more.

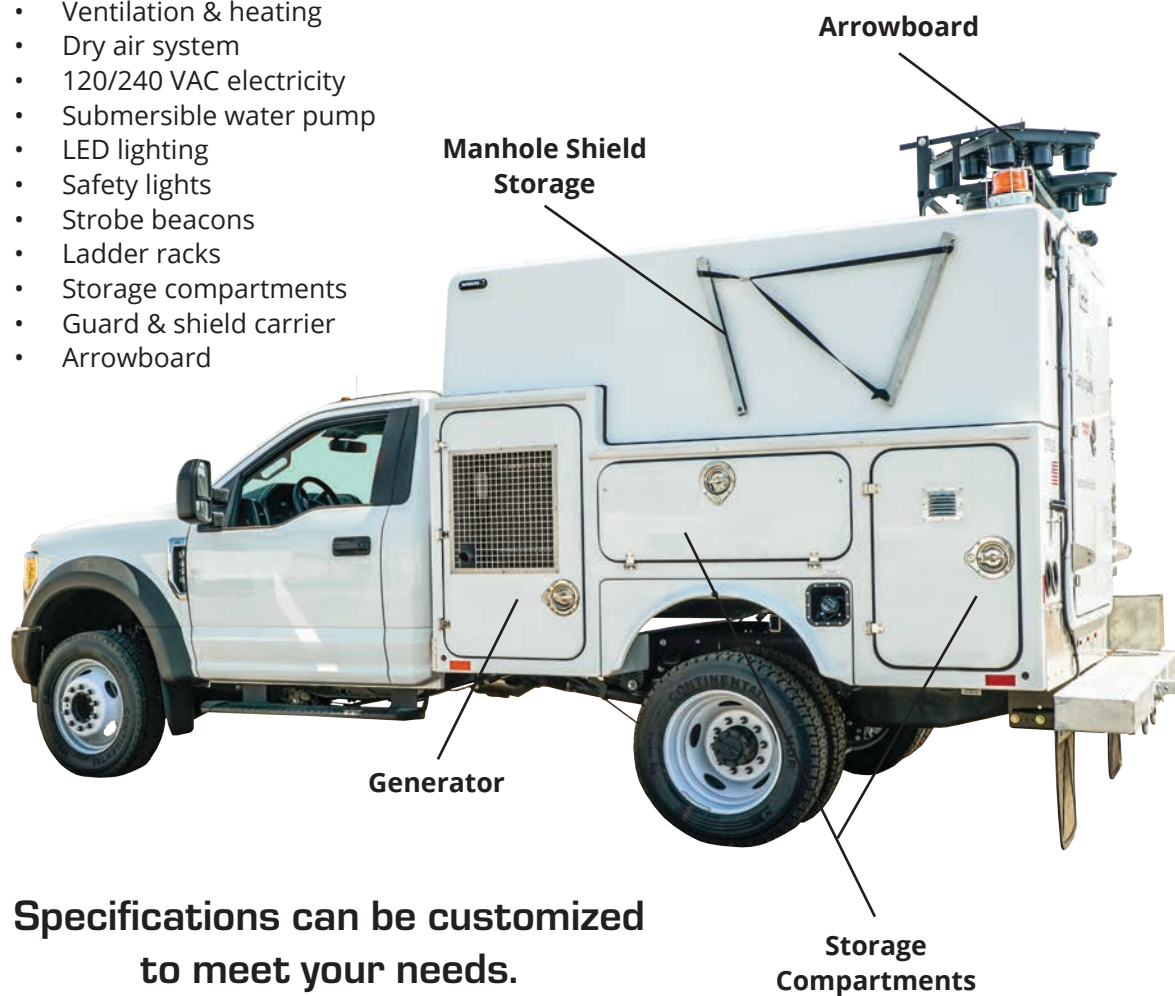
The Utility Support Truck includes everything you need to safely and efficiently work in confined spaces. Everything you need is easy to access, and the vehicle can support a variety of safety accessories. When looking for a vehicle to service confined spaces, the Pelsue Utility Support Truck is an all-in-one solution to meet your needs.

REV. 05.15.2020



Service Body (Optional Components)

- 10kW or 12kW Pelsue gasoline genset or Kubota diesel genset
- Compressed air
- Ventilation & heating
- Dry air system
- 120/240 VAC electricity
- Submersible water pump
- LED lighting
- Safety lights
- Strobe beacons
- Ladder racks
- Storage compartments
- Guard & shield carrier
- Arrowboard



**Specifications can be customized
to meet your needs.**

HIGH ROOF VAN SERIES

**CUSTOMIZABLE TO MEET YOUR NEEDS
WIDE VARIETY OF AVAILABLE OPTIONS
GAS OR DIESEL CUMMINS ONAN GENSET**

APPLICATIONS

- Mobile office
- Command center
- Mechanic's support vehicle
- Police departments
- DOT inspection
- Satellite communications
- Air maintenance
- Live video production
- And more!



**CAN BE APPLIED TO
OTHER VEHICLES**

REV. 05.15.2020

Customizable Options

- Gas or diesel genset
- Lighting
- Interior packages
- Storage solutions
- Cabinets
- Sound
- Heating and cooling
- Beacons
- And more!



The Pelsue High Roof Van Series is extremely versatile, and can be upfitted to meet your specific needs. Whether you are looking for a mobile office, command center, or workspace, the Pelsue High Roof Van is a great solution. The vans are easy to drive and maneuver, and provide effortless entry and exit. Choose Pelsue to engineer and upfit a solution for your desired application.

While the High Roof Van is featured, it can be applied to other vehicles if desired.



VEHICLE CUSTOMIZATION

OUR EXPERTISE

We've manufactured and upfitted thousands of vehicles for leading communication companies, the U.S. Air Force, U.S. Marine Corps, the Department of Defense, police departments, and search and rescue organizations. Since 1963, Pelsue has continued to pursue innovation without losing sight of the traditional quality and service that has made us a premier manufacturer of mobile systems.

CUSTOM VEHICLES WE'VE MANUFACTURED

- Satellite Communication Trailers
- Crime Scene Investigation Mobile Labs
- Hazmat Decontamination Vehicles
- Air Quality Control Monitoring Vehicles
- Emergency Response Command Centers
- Fiber Splicing Vehicles
- Confined Space Support Vehicles
- Thumper Trailers
- Line Shot Vehicles



LOOKING FOR A CUSTOM VEHICLE?

CALL TODAY AND WE CAN HELP

CUSTOM TRAILERS/BODIES

VEHICLES

TENTS

FALL

PROTECTION

VENTILATION

MANHOLE

EQUIPMENT

LOOKING FOR A CUSTOM TRAILER SOLUTION?

If one of our trailer models doesn't meet your needs, we can create a custom solution from the ground up, or take an existing model and modify it.



LOOKING FOR CUSTOM BODIES?

We manufacture and engineer custom bodies for a variety of applications. If you are looking for a custom body, contact us today.

We can tailor-make a solution that fits your needs, backed by the quality and service of the Pelsue brand.



ASK US ABOUT OUR

CUSTOM SOLUTIONS

VEHICLE ACCESSORIES

SPLICING TRAILER TASK CHAIR

Model 9064

The Pelsue Splicing Trailer Task Chair can fit easily within any trailer or vehicle without getting in the way.



FIBER OPTIC CABLE CLAMP

Model 9S27

The Pelsue Fiber Optic Cable Clamp is quick and easy to set up. It is lightweight and great for working on a folding table or vehicle countertop.

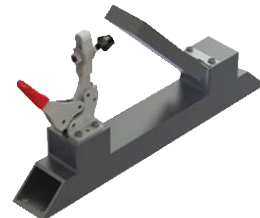
It has a one button bump and a single compression clip for strong suction. The black grip foam conforms to different cable sizes.



HEAVY-DUTY CABLE CLAMP

Model 9H27

A heavy-duty cable clamp with a solid 3/4" aluminum upper clamping arm. Other clamps use a hollow aluminum upper arm that will eventually cave in during use, leading to a loss of clamping power.



TENTS



ALL-WEATHER FIBER SPLICING TENT
6508DRAD-FS

MADE IN

COLORADO

INNOVATIVE DESIGN

POP-UP TECHNOLOGY ALLOWS FOR QUICK, EASY SET-UP



RECOMMENDED SET-UP INSTRUCTIONS

Set up the tent so it is spread out on the ground in the shape of an 'M'.

Grab the center poles (marked with a yellow dot) and walk them in until the roof is above you.



Pop up the roof first, if applicable, and then push out the hubs on each side, saving the back side for last.



Tent Hub



Stake down the tent for extra support.

REV. 05.15.2020

TENTS & SHELTERS

STANDARD SERIES

EASY SET-UP ZIPPER DOOR LIGHTWEIGHT

| Model | Nominal Size | Weight | Folded Dimensions |
|-------|------------------------|----------|-------------------|
| 6504A | 4' W x 4' L x 6' H | 18 lbs. | 6" D x 3.8' H |
| 6506A | 6' W x 6' L x 6' H | 20 lbs. | 6" D x 4.5' H |
| 6508A | 8' W x 8' L x 6.5' H | 31 lbs. | 7" D x 5.5' H |
| 6510A | 10' W x 10' L x 6.5' H | 34 lbs. | 8" D x 6.3' H |
| 6514A | 14' W x 14' L x 7' H | 162 lbs. | 10" D x 10.3' H |

The Pelsue Standard Series Tents can be deployed rapidly and are easy to transport. They are great, lightweight tents where extra functionality isn't needed. The tents incorporate a dual zipper roll-up door for easy entry and exit.

Includes

- 2 screen windows with roll-up flaps
- 3 tie-down cords through the hub
- Ground flaps
- Heavy-duty frame
- Dual zipper roll-up door
- 7 stakes and 4 ground loops
- Carrying case

Tent Specifications

Fabric

- 250 denier polyester
- Urethane coated
- Waterproof
- Mildew resistant
- UV protected
- Flame retardant (to CPAI-84 & NFPA701)

Frame

- Cast aluminum hubs
- Pultruded fiberglass rods

Construction

- Double stitched binding
- Exposed roof seams sealed
- Non-metallic snaps & rings



VEHICLES

TENTS

PROTECTION

FALL

VENTILATION

MANHOLE

EQUIPMENT

INTERLOCKING SERIES

EASY SET-UP INTERLOCKING DOORS 8" VENTILATION SLEEVE



Ventilation Sleeve

Flaps held back with clips & D-rings



Tent closed off using clips & D-rings

| Model | Nominal Size | Weight | Folded Dimensions |
|-------|------------------------|---------|-------------------|
| 6506D | 6' W x 6' L x 6' H | 21 lbs. | 6" D x 4.5' H |
| 6508D | 8' W x 8' L x 6.5' H | 32 lbs. | 7" D x 5.5' H |
| 6510D | 10' W x 10' L x 6.5' H | 36 lbs. | 8" D x 6.75' H |
| 6510C | 10' W x 10' L x 9' H | 51 lbs. | 8" D x 7.3' H |
| 6512D | 12' W x 12' L x 6.5' H | 94 lbs. | 10" D x 8.3' H |

*6510C is an extra tall, 9' high model

Includes

- Clips and D-rings with interlocking flaps
- Rear 8" ventilation hose entry sleeve
- Heavy-duty frame
- 2 screen windows with roll-up flaps
- 3 tie-down cords through the hubs
- 7 stakes and 4 ground loops
- Carrying case

INTERLOCKING FLAPS

The interlocking flaps allow you to connect two tents together, or attach the tent to a work vehicle. The interlocking flaps are a great way to get extra functionality out of your tent.



Tent Specifications

Fabric

- 250 denier polyester
- Urethane coated
- Waterproof
- Mildew resistant
- UV protected
- Flame retardant (to CPAI-84 & NFPA701)

Frame

- Cast aluminum hubs
- Pultruded fiberglass rods

Construction

- Double stitched binding
- Exposed roof seams sealed
- Non-metallic snaps & rings

REV. 05.15.2020

DUAL-ENTRY SERIES

VEHICLES

TENTS

FALL

PROTECTION

VENTILATION

MANHOLE

EQUIPMENT

REAR-ACCESS DOOR EASY SET-UP INTERLOCKING DOORS



Includes

- Clips and D-rings with interlocking flaps
- 30" wide dual zipper roll-up rear-access door
- Heavy-duty frame
- Roll-up front flaps
- 8" side ventilation hose entry sleeve
- 2 screen windows with roll-up flaps
- 3 tie-down cords through the hubs
- 7 stakes and 4 ground loops
- Carrying case



Tent closed off using clips & D-rings

| Model | Nominal Size | Weight | Folded Dimensions |
|----------|------------------------|---------|-------------------|
| 6508DRAD | 8' W x 8' L x 6.5' H | 32 lbs. | 7" D x 5.5' H |
| 6510DRAD | 10' W x 10' L x 6.5' H | 36 lbs. | 8" D x 6.75' H |

The Pelsue Dual-Entry Series improves upon the Interlocking Series by adding a rear-access door for easy entry and exit when the front of the tent is closed off. This allows for greater access to work on a cabinet/box, when two tents are connected together, or when the tent is attached to a work vehicle.

Tent Specifications

Fabric

- 250 denier polyester
- Urethane coated
- Waterproof
- Mildew resistant
- UV protected
- Flame retardant (to CPAI-84 & NFPA701)

Frame

- Cast aluminum hubs
- Pultruded fiberglass rods

Construction

- Double stitched binding
- Exposed roof seams sealed
- Non-metallic snaps & rings



Connect two DRAD Tents together for extra work space

SOLARSHADE® FIBER SPLICING TENT

**SUN & LIGHT BLOCKING
ZIPPER DOOR
REAR CABLE SLOT**



Cable slot in the rear of the tent



Tent Specifications

Fabric

- 200 denier polyester
- Urethane coated
- Waterproof
- Mildew resistant
- UV protected
- Flame retardant (to CPAI-84 & NFPA701)

Frame

- Cast aluminum hubs
- Pultruded fiberglass rods

Construction

- Double stitched binding
- Exposed roof seams sealed
- Non-metallic snaps & rings

| Model | Nominal Size | Weight | Folded Dimensions |
|--------|----------------------|---------|-------------------|
| 6506FS | 6' W x 6' L x 6.5' H | 20 lbs. | 6" D x 4.6' H |
| 6508FS | 8' W x 8' L x 6.5' H | 31 lbs. | 7" D x 5.5' H |



Includes

- Solar blocking fabric on all sides
- 28" rear cable slot
- Heavy-duty frame for increased wind resistance
- Roll-up front door with double sided zippers
- Double sided zipper on cable slot
- Tie-down cords for extra support
- Oversized, black, mesh windows on each side of the tent
- 7 stakes and 4 ground loops
- Carrying case

The Pelsue SolarShade® Fiber Splicing Tent incorporates special solar blocking material throughout the interior. The material helps block solar gain as well as unwanted light. This allows the tent to be deployed in hot weather environments, where the tent acts like a shade tree. The tent can be closed off and the interior can then be lit by controlled lighting.

The tent includes a 28" cable slot for the pass-through of splice cases.

SOLARSHADE® WORK SHELTER

VEHICLES

**PORTABLE INSTANT SHADE
BLOCKS SOLAR GAIN
SIDES ROLL UP**



| Model | Nominal Size | Weight | Folded Dimensions |
|---------|------------------------|---------|-------------------|
| 6504SRS | 4' W x 4' L x 6.5' H | 21 lbs. | 8" D x 4.75' H |
| 6506SRS | 6' W x 6' L x 6.5' H | 33 lbs. | 8" D x 5.6' H |
| 6508SRS | 8' W x 8' L x 6.5' H | 42 lbs. | 8" D x 5.6' H |
| 6510SRS | 10' W x 10' L x 6.5' H | 43 lbs. | 8" D x 6.75' H |



PROTECTION

FALL

VENTILATION

EQUIPMENT

MANHOLE

Includes

- Solar blocking material on all interior surfaces
- Roll-up front door with double sided zippers
- 3 mesh sides to allow for ventilation
- Removable fly for blocking late afternoon sun
- Roll-up front door and windows
- Reflective strip
- Tie-down cords for extra support
- 7 stakes and 4 ground loops
- Carrying case

The Pelsue SolarShade® Work Shelter can be rapidly deployed, and creates instant shade. Three sides of the tent have full-size, roll-up mesh windows for maximum ventilation.

The SolarShade® Series tents incorporate special solar blocking material, which prevents solar gain, so the tent stays cooler compared to the typical fabrics used in most other tents.

Tent Specifications

Fabric

- 200 denier polyester
- Urethane coated
- Waterproof
- Mildew resistant
- UV protected
- Flame retardant (to CPAI-84 & NFPA701)

Frame

- Cast aluminum hubs
- Pultruded fiberglass rods

Construction

- Double stitched binding
- Exposed roof seams sealed
- Non-metallic snaps & rings



SOLARSHADE® UMBRELLA SERIES

INSTANT SHADE RAPID DEPLOYMENT STRONG SUCTION

The roof and three of the walls are made of SolarShade material, which is white on the outside, and black on the inside. The fourth wall is a translucent white, which allows diffused light to pass through for working light. This arrangement allows the tent to provide ultra violet protection without blacking out all light, and there is no need for additional lighting during daylight hours.

Tent Specifications

Fabric

- 200 denier polyester (6759)
- 200 denier polyester roof and three walls, 250 denier translucent polyester 4th wall (67642)
- Urethane coated
- Waterproof
- Mildew resistant
- UV protected
- Flame retardant (to CPAI-84 & NFPA701)

Construction

- Double stitched binding
- Exposed roof seams sealed
- Non-metallic snaps & rings

Frame

- Cast aluminum hubs
- Pultruded fiberglass rods

Includes

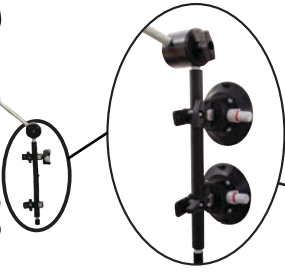
- Solar blocking material
- Adjustable support with 3 joints for versatility
- 2 hinge joints
- 1 ball joint on top
- Visible low suction indicators
- Carrying case

| Model | Nominal Size | Weight | Folded Dimensions |
|-------|---------------------------------------|---------|-------------------|
| 6742 | 3.5' W x 3.5' L with 5' drop walls | 14 lbs. | 8" D x 3.75' H |
| 6759 | 4.9' W x 4.9' L | 9 lbs. | 6" D x 3.75' H |

The shelters can be set up on smooth surfaces, including curved surfaces like the side of a work truck. Low suction indicators provide you a warning if a loss of suction is occurring.



6742



125508-E01



6759

REV. 05.15.2020

ALL-WEATHER FIBER SPLICING TENT

SOLAR BLOCKING TOP
REAR ACCESS DOOR
THREE 14" SLEEVES



14" Cable/Vent Sleeves

| Model | Nominal Size | Weight | Folded Dimensions |
|-------------|----------------------|---------|-------------------|
| 6508DRAD-FS | 8' W x 8' L x 6.5' H | 32 lbs. | 7" D x 5.5' H |

Tent Specifications

Fabric

- 200 denier polyester (Top)
- 250 denier polyester (Sides)
- Urethane coated
- Waterproof
- Mildew resistant
- UV protected
- Flame retardant (to CPAI-84 & NFPA701)

Frame

- Cast aluminum hubs
- Pultruded fiberglass rods

Construction

- Double stitched binding
- Exposed roof seams sealed
- Non-metallic snaps & rings

INTERLOCKING FLAPS

The interlocking flaps allow you to connect two tents together, or attach the tent to a work vehicle. The



interlocking flaps are a great way to get extra functionality out of your tent.

The Pelsue All-Weather Fiber Splicing Tent was specifically designed for use in all seasons. It has a special solar blocking top, combined with translucent sides to allow light in.

It includes three 14" sleeves for ventilation hoses, or for the pass-through of splice cases.

The All-Weather Tent is perfect for use with the Pelsue Portable Air Conditioner (pg. 73), which will keep the tent cool, even when the temperatures outside are scorching.

Includes

- Clips and D-rings with interlocking flaps
- Solar blocking top
- 30" wide dual zipper roll-up rear access door
- Three 14" cable/ventilation sleeves
- Heavy-duty frame
- Roll-up front flaps
- 2 screen windows with roll-up flaps
- 3 tie-down cords through the hubs
- 7 stakes and 4 ground loops
- Carrying case



ALL-WEATHER FIBER TO THE HOME TENT

ADJUSTABLE WIDTH RAPID DEPLOYMENT SOLAR BLOCKING TOP

The Pelsue Fiber To The Home Tent is one of the most versatile work tents on the market. It can narrow down to 2 feet wide to function in restricted spaces, or expand out to 6 feet wide.

It can be used for a variety of applications from Fiber To The Home, to a trench tent, to an all-weather work tent.

| Model | Nominal Size | Weight | Folded Dimensions |
|-------|--------------------|---------|-------------------|
| 6705 | 6' W x 6' L x 7' H | 17 lbs. | 7" D x 4.6' H |



Narrows down to 2 ft.

Tent Specifications

Fabric

- 200 denier polyester (Top)
- 250 denier polyester (Sides)
- Urethane coated
- Waterproof
- Mildew resistant
- UV protected
- Flame retardant (to CPAI-84 & NFPA701)

Frame

- Cast aluminum hubs
- Pultruded fiberglass rods

Construction

- Double stitched binding
- Exposed roof seams sealed
- Non-metallic snaps & rings

Includes

- Each tent can be secured with Velcro® brand or equivalent fastener to wrap around objects
- Fasteners to keep doors open
- Tent flaps
- Solar blocking top
- Heavy-duty frame
- 2 screen windows with roll-up flaps
- 2 tie-down cords through hubs
- 6 stakes and 4 ground loops
- Carrying case



Extends up to 6 ft.

REV. 05.15.2020

ALL-WEATHER MULTI-TENT



5-IN-1 TENT SOLAR BLOCKING TOP EASY SET-UP

| Model | Nominal Size | Weight | Folded Dimensions |
|-----------------|------------------------|---------|-------------------|
| 6334A | 3.6' W x 3.6' L x 8' H | 11 lbs. | 6" D x 3' H |
| 6334AP | 3.6' W x 3.6' L x 8' H | 11 lbs. | 6" D x 3' H |
| 6334AP-C | 3.6' W x 3.6' L x 8' H | 11 lbs. | 6" D x 3' H |
| 6334AN | 5' W x 5' L x 8' H | 18 lbs. | 8" D x 8' H |

The Pelsue Multi-Tent can attach to a strand, bucket, ladder, pole, or manhole guard with the appropriate hardware.

This tent is available with a plastic hub (**6334AP**) instead of metal hub (**6334A**). Model **6334AP-C** is non-metallic with a shortened strand clamp hardware.

Includes

- Strand Hardware (**63350**)
- Clips & D-rings to close off tent
- Solar blocking top
- Heavy-duty frame
- Roll-up sides
- Carrying case

HARDWARE

| Model | Description |
|---|---|
|  63350 | Strand Hardware <i>Included</i> |
|  63360 | Bucket Hardware <i>Not included</i> |
|  63380 | Ladder/Pole Hardware <i>Not included</i> |
|  63390 | Guard Hardware <i>Not included</i> |



Fabric

- 200 denier polyester (Top)
- 250 denier polyester (Sides)
- Urethane coated
- Waterproof
- Mildew resistant
- UV protected
- Flame retardant (to CPAI-84 & NFPA701)

Tent Specifications

Frame

- Cast aluminum hubs (**6334A**)
- Plastic hubs (**6334AP**)
- Pultruded fiberglass rods

Construction

- Double stitched binding
- Exposed roof seams sealed
- Non-metallic snaps & rings

VEHICLES

TENTS

FALL

PROTECTION

VENTILATION

MANHOLE

EQUIPMENT

TRENCH SERIES

**ONE-PIECE CONSTRUCTION
FITS OVER OBSTACLES
INDUSTRIAL STRENGTH**



The Pelsue Trench Series Tents offer protection from the elements during trenching or boring operations. One-piece construction allows for easy set-up and break-down.

Tent Specifications

Fabric

- 250 denier polyester
- Urethane coated
- Waterproof
- Mildew resistant
- UV protected
- Flame retardant (to CPAI-84 & NFPA701)

Construction

- Double stitched binding
- Exposed roof seams sealed
- Non-metallic snaps & rings

Frame

- Cast aluminum hubs
- Pultruded fiberglass rods

There are openings on both ends for easy access.

The tents may be used as a modular set up by adding as many units (end to end) as required.

Includes

- Heavy-duty frame
- Windows with roll-up flaps
- Openings on both ends of tent for easy entry
- Tie-down cords on hubs for extra stability
- Carrying case and stakes

| Model | Nominal Size | Weight | Folded Dimensions |
|-------|--------------------------|----------|------------------------|
| 6408A | 8' W x 16' L x 6.6' H | 43 lbs. | 8" W x 8" L x 6.25' H |
| 6413A | 13' W x 24' L x 8.25' H | 109 lbs. | 12" W x 16" L x 8.3' H |
| 6416A | 16' W x 30' L x 10.25' H | 185 lbs. | 12" W x 16" L x 8.3' H |

REV. 05.15.2020

HIGH-RISE SERIES

VEHICLES

TENTS

FALL

VENTILATION

MANHOLE

PROTECTION

EQUIPMENT



EXTRA HEIGHT WRAPS AROUND POLES REAR ACCESS DOOR

The Pelsue High-Rise Series Tents are ideal for use over tripod (pg. 57) or davit (pg. 47) rescue systems, or on pole-mounted cabinets that require additional height.

Includes

- Front door with Velcro® brand or equivalent fastener to wrap around objects
- Rear access, 1/2 moon door
- Exterior buckles to secure tent around poles
- 8" rear vent sleeves
- Fasteners to keep doors open
- Heavy-duty frame
- 2 screen windows with roll-up flaps
- 3 tie-down cords through the hubs
- 7 stakes and 4 ground loops
- Carrying case

Tent Specifications

Fabric

- 250 denier polyester
- Urethane coated
- Waterproof
- Mildew resistant
- UV protected
- Flame retardant (to CPAI-84 & NFPA701)

Frame

- Cast aluminum hubs
- Pultruded fiberglass rods

Construction

- Double stitched binding
- Exposed roof seams sealed
- Non-metallic snaps & rings

| Model | Nominal Size | Weight | Folded Dimensions |
|--------|--------------------|---------|-------------------|
| 65068A | 6' W x 6' L x 8' H | 28 lbs. | 8" D x 5.6' H |
| 65089A | 8' W x 8' L x 9' H | 43 lbs. | 8" D x 6' H |



Exterior buckles allow the tent to be strapped around a pole



TENT CUSTOMIZATION

COLORS

Want your tent in a different color?

Pelsue can customize the tent fabric, so you can get the color that fits your needs.



CABLE SLOTS/VENT SLEEVES

Need a larger cable access slot to fit your splice cases? Want additional ventilation sleeves?

Pelsue can create a solution around your specific needs.



CUSTOM LOGO

Want to showcase your company?

Pelsue can add your logo to the tents.



1/2 MOON DOOR

Want easier access when your tent is closed off?

Pelsue can add a 1/2 moon door for your needs.



NEED SOMETHING ELSE?

CALL TODAY AND WE CAN HELP

FALL PROTECTION



LIFEGUARD SYSTEM
LG5A

MADE IN

COLORADO

FALL PROTECTION

LIFEGUARD SYSTEM

LIGHTWEIGHT EASY SET-UP ALL-IN-ONE SYSTEM

| Model | Description | Weight |
|-------|---|---------|
| LG5A | Fall Protection/Retrieval Manhole Guard System, 42" W x 42" L x 75" H | 75 lbs. |
| LG5X | Fall Protection/Retrieval Manhole Guard System, 48" W x 48" L x 84" H | 98 lbs. |

The Pelsue LifeGuard System is our flagship fall protection system for confined space applications. The system provides anchorage for hoists and SRLs for use in fall protection and rescue, while also acting as a barricade to prevent people from accidentally falling or slipping into the confined space.

The LifeGuard has a compact profile and can easily be deployed by a single person in minutes. The system is lightweight, easy to set up and collapse, and is built to last. The system easily collapses into two different assemblies for easy transport and storage.

The LifeGuard is made in Colorado, USA and meets or exceeds OSHA and ANSI standards.



3-IN-1

- Fall protection system
- Rescue system
- Barricade



Locking System

REV. 05.15.2020

BOTH SYSTEMS:**Features**

- Meets or exceeds OSHA and ANSI standards
- Can be used with hoists, SRL's, or a combination of devices
- Dual anchor points
- 5000 lb. overhead proof load
- Certified fall arrest anchorage
- Easy to center over manhole
- Man rated capacity: 310 lbs.*

Systems Include

- 1 upper assembly
- 1 guard assembly
- Set of 4 metal feet with rubber bottoms
- 1 hoist bracket & mounting plate for use with standard retrieval hoist
- 1 pulley assembly with auto-lock carabiner
- 1 set of flexible draw latches to anchor the upper assembly to the guard assembly

Suggested Hoists/SRL's

- PH07C (pg.58)
- PH07R (pg. 58)
- PSRL1150-SS (pg. 60)
- PSRL1350-TRB (pg. 61)

Suggested Accessories

- MB-PF1 standard quick-connect bracket (pg.62)
- PA01 Pulley Assembly (pg. 63)

**Lightweight and
easy to transport!**

LG5A Weight & Dimensions

- Upper assembly: 42 lbs.
- Guard assembly: 33 lbs.
- Dimensions: 42" W x 42" L x 75" H
- Dimensions when folded:
LG5-TA: 15.5" W x 14" L x 3.5' H
LG5-GA: 43.5" W x 5.5" L x 3.6' H

LG5X Weight & Dimensions

- Upper assembly: 60 lbs.
- Guard assembly: 38 lbs.
- Dimensions: 49" W x 49" L x 84" H
- Dimensions when folded:
LG5-TX: 15.5" W x 16.5" L x 4.5' H
LG5-GX: 44.5" W x 5.5" L x 4.1' H

**LG5A****Dual Anchor
Points****INDIVIDUAL PARTS & ACCESSORIES**

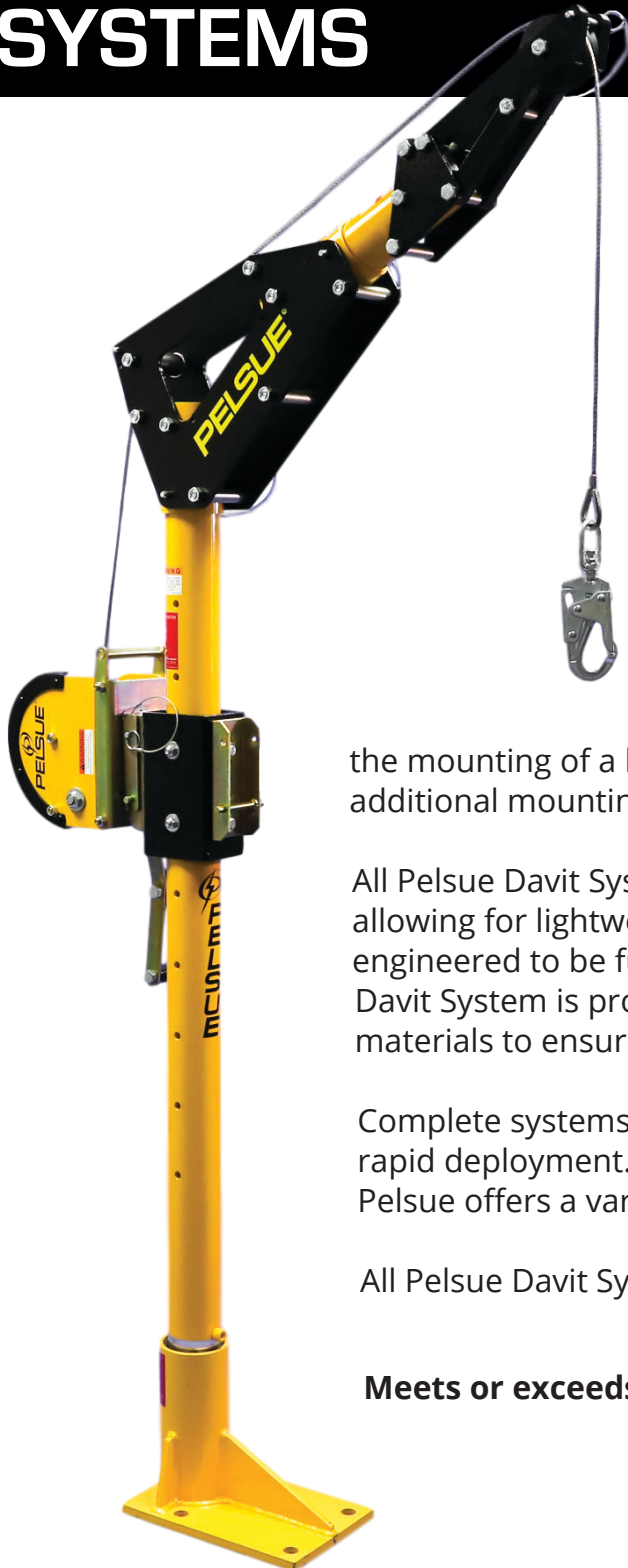
| Model | Description | Weight |
|-------------------|---|---------|
| LG5-TA | Upper assembly for LG5A | 42 lbs. |
| LG5-GA | Guard assembly for LG5A | 33 lbs. |
| LG5-TX | Upper assembly for LG5X | 60 lbs. |
| LG5-GX | Guard assembly for LG5X | 38 lbs. |
| LGL-B | LifeGuard secondary hoist bracket (includes MB-PF1 and a platform bracket) | |
| LG-C | Carrying case for upper assembly | |
| 126898-001 | Metal feet with rubber bottoms | |

***"Man Rated"**

- The device or system is tested to meet the appropriate OSHA Safety Standards for confined space rescue and retrieval or fall protection for personnel.
- The device or system is intended to be used for confined space rescue and retrieval or fall protection by a worker who is trained as a "competent person" and/or "qualified" per OSHA Safety Standards.

DAVIT SYSTEMS

PERMANENT BASE SYSTEMS



LIGHTWEIGHT PORTABLE EASY SET-UP

The Pelsue Davit System is extremely versatile and can be used for both fall protection and rescue & retrieval. The system includes a universal bracket for the mounting of a hoist, standard SRL, or 3-Way SRL, and offers an additional mounting location for using two systems.

All Pelsue Davit Systems are built from structural aluminum, allowing for lightweight and portable use. They are also specially engineered to be fully set up in about 5 minutes. The Pelsue Davit System is proudly made in America with the highest quality materials to ensure the system will provide you years of service.

Complete systems provide a complete arm and portable base for rapid deployment. For extended reach or permanent applications, Pelsue offers a variety of bases to meet your needs (pg. 49-52).

All Pelsue Davit Systems are man rated to 310 lbs.

Meets or exceeds OSHA and ANSI standards

REV. 05.15.2020

COMPLETE ARMS

VEHICLES

TENTS

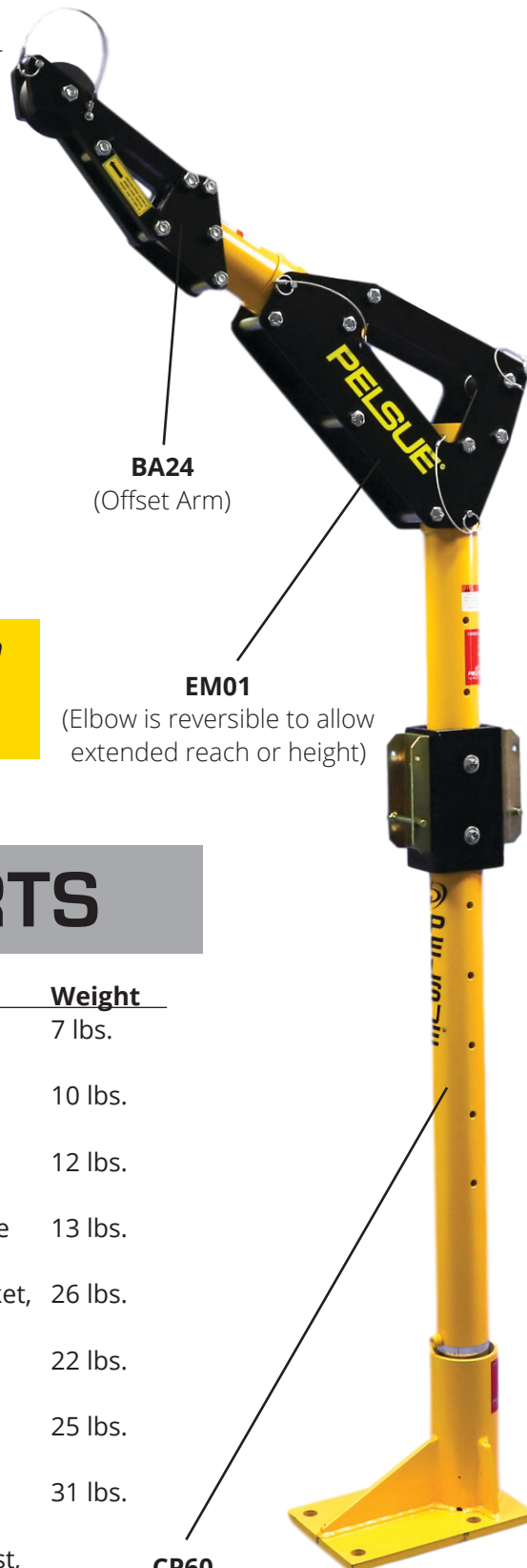
FALL
PROTECTION

VENTILATION

MANHOLE
EQUIPMENT

| Model | Description | Weight |
|--------|--|---------|
| DK1824 | Davit Mast, includes center post (CP60), elbow (EM01), and 18"/24" offset arm (BA24), (base and hoist sold separately) | 45 lbs. |
| DK3036 | Davit Mast, includes center post (CP60), elbow (EM01), and 30"/36" offset arm (BA36), (base and hoist sold separately) | 48 lbs. |
| DK4248 | Davit Mast, includes center post (CP60), elbow (EM01), and 42"/48" offset arm (BA48) (base and hoist sold separately) | 51 lbs. |

Complete Arms can be used in conjunction with portable and permanent bases to meet desired application.



CP60
(Center Post with
Hoist Bracket)

DK1824 with
DSP-F1 Base

INDIVIDUAL PARTS

| Model | Description | Weight |
|--------|---|---------|
| BA24 | Offset Arm, aluminum, with pulley & U-bracket, 18"/24" offset reach | 7 lbs. |
| BA36 | Offset Arm, aluminum, with pulley & U-bracket, 30"/36" offset reach | 10 lbs. |
| BA48 | Offset Arm, aluminum, with pulley & U-bracket, 42"/48" offset reach | 12 lbs. |
| EM01 | Elbow, fabricated aluminum, reversible for different offset lengths | 13 lbs. |
| CP60 | Center post with hoist mounting bracket, aluminum, 60" H. | 26 lbs. |
| CPX-15 | Center post extension, powder coated steel, 15" | 22 lbs. |
| CPX-24 | Center post extension, powder coated steel, 24" | 25 lbs. |
| CPX-36 | Center post extension, powder coated steel, 36" | 31 lbs. |
| BGDK | Carrying case for Davit Kit—center post, elbow and arm | |

PERMANENT MOUNT SLEEVES

ADVANTAGES OF PERMANENT MOUNT SLEEVES

- Always on site
- Provides greater offset reach
- Allows 360° pivot



| Model | Type | Weight |
|---------------|------------------|---------|
| DSP-F1 | Coated Steel | 24 lbs. |
| DSS-F1 | Stainless Steel | 24 lbs. |
| DSG-F1 | Galvanized Steel | 24 lbs. |

Floor Mounted

The floor mount is anchored by bolts, or it welds to a variety of surfaces such as floors, truck beds, catwalks, etc. Contact Pelsue for specific installation requirements.



| Model | Type | Weight |
|---------------|------------------|---------|
| DSP-F2 | Coated Steel | 24 lbs. |
| DSS-F2 | Stainless Steel | 24 lbs. |
| DSG-F2 | Galvanized Steel | 24 lbs. |

Center Floor Mounted

The center floor mount is anchored by bolts, or it welds to a variety of surfaces such as floors, truck beds, catwalks, etc. Please contact Pelsue for specific installation requirements.



| Model | Type | Weight |
|---------------|------------------|---------|
| DSP-W1 | Coated Steel | 22 lbs. |
| DSS-W1 | Stainless Steel | 22 lbs. |
| DSG-W1 | Galvanized Steel | 22 lbs. |

Wall Mounted

The wall mount is anchored by bolts, or it welds to truck bumpers, tank walls, sides of catwalks, meter pits, clarifier's, etc. Please contact Pelsue for specific installation requirements.



| Model | Type | Weight |
|---------------|--------------|---------|
| DSP-A1 | Coated Steel | 26 lbs. |

Inside Corner Mounted

Inside 90° angle. The corner mount is anchored by bolts to reinforced truck bumpers, walls, etc. Please contact Pelsue for specific installation requirements.



| Model | Type | Weight |
|---------------|--------------|---------|
| DSP-A2 | Coated Steel | 26 lbs. |

Outside Corner Mounted

Outside 90° angle. The corner mount is anchored by bolts to reinforced truck bumpers, walls, etc. Please contact Pelsue for specific installation requirements.



| Model | Type | Weight |
|---------------|-----------------|--------|
| DSP-C2 | Coated Steel | 9 lbs. |
| DSS-C2 | Stainless Steel | 9 lbs. |

Cylinder Core

The Cylinder core mount is drilled into existing concrete or poured into fresh concrete, and must be secured to the concrete with grout or epoxy compatible with plant conditions. Pelsue contact for specific installation requirements.

Custom davit sleeves available upon request.



| Model | Type | Weight |
|--------|-----------------|---------|
| DSP-C1 | Coated Steel | 21 lbs. |
| DSS-C1 | Stainless Steel | 21 lbs. |

Flush Floor Mounted - Fresh Pour Concrete

Placed in fresh concrete, this sleeve mounts flush with the floor and is great for high traffic areas where trip hazards are a concern. Please contact Pelsue for specific installation requirements.



| Model | Type | Weight |
|--------|-----------------|---------|
| DSP-F3 | Coated Steel | 23 lbs. |
| DSS-F3 | Stainless Steel | 23 lbs. |

Flush Floor Mounted - Existing concrete

The existing concrete flush floor mount is drilled and bolted in concrete or welded or bolted in steel. Great for high-traffic areas where trip hazards are a concern. Please contact Pelsue for specific installation requirements.

PORTABLE WALL MOUNTED BASES



| Model | Type | Weight |
|---------|-----------------------------|---------|
| DSR-S03 | Zinc Plated Carbon Steel | 58 lbs. |

Portable Wall Mount

The DSR-S03 portable wall mount is made of zinc plated carbon steel. Clamping via eight bolts, the wall mount straddles walls of tanks, caissons, shorings, etc. up to 3" thick.



| Model | Type | Weight |
|---------|-------------------------|---------|
| DSR-A08 | Yellow Powder Coated | 35 lbs. |

Clamping Portable Wall Mount

For clamping onto a wall ranging from 3" to 8" thick walls.



| Model | Type | Weight |
|---------|-------------------------|---------|
| DSR-ADJ | Yellow Powder Coated | 55 lbs. |

Adjustable Wall Mount

The adjustable wall mount can clamp to any wall ranging from 1" - 23.25" thick.

SLEEVE ACCESSORIES

| Model | Type | Weight |
|--------|-------------------|----------|
| DSC-S2 | Zinc Plated Steel | 1 lbs. |
| DSC-S1 | Stainless | 1 lbs. |
| DSC-P1 | ABS Plastic | .24 lbs. |

Sleeve Caps

Used to seal sleeves when not in use. Available in zinc plated steel, stainless steel or ABS plastic. Has a rubber seal that expands into sleeve.



DSC-S2

PORTABLE BASE SYSTEMS

| Model | Description | Weight |
|---------------|--|----------|
| RK-EB1 | Portable Davit System - includes Davit Mast with 18"/24" offset reach and expandable portable base 36" - 56" | 145 lbs. |
| RK-EB2 | Portable Davit System - includes Davit Mast with 18"/24" offset reach and expandable portable base 46" - 66" | 160 lbs. |

Hoists sold separately

EXPANDABLE DAVIT BASE

The Pelsue **Model EB56** and **EB66** are lightweight and portable bases designed for use with Pelsue Davit Arms. The width can be easily adjusted and the entire base collapses down into convenient storage dimensions. The bases have wheels so you can easily roll the system to the confined space. They include 4 corner jacks for leveling on uneven ground. **Max. davit offset is 18" to 24"**.

Meets or exceeds OSHA and ANSI standards

| Model | Description | Weight |
|----------------|---|----------|
| EB56 | Adjustable 36" - 56" inside width, 18" maximum offset | 100 lbs. |
| EB66 | Adjustable 46" - 66" inside width, 24" maximum offset | 115 lbs. |
| DBF-43A | Folding, 48" W x 36" deep nominally, 18" maximum offset, aluminum | 35 lbs. |

FOLDING DAVIT BASE

The Pelsue **Model DBF-43A** is a lightweight, compact, portable base designed for use with the Pelsue Davit System. It can be folded and transported in its folded configuration, allowing for easy movement and placement. The base can be unfolded and assembled around a confined space. It includes 4 corner jacks for leveling on uneven ground, as well as a handle for easy transport. **Max. Davit offset is 12" to 18"**.



DBF-43A



*Dimensions when
Folded:
42" x 13" x 16.5"*



EB56

VEHICLE HITCH MOUNT SYSTEMS

VEHICLES

TENTS

FALL
PROTECTION

VENTILATION

MANHOLE
EQUIPMENT

| Model | Description | Weight |
|-------------------------------|--|---------|
| RK-HS1 | Vehicle hitch mount, Davit Mast with 18"/24" offset reach and multi-directional receiver | 93 lbs. |
| <i>Hoists sold separately</i> | | |

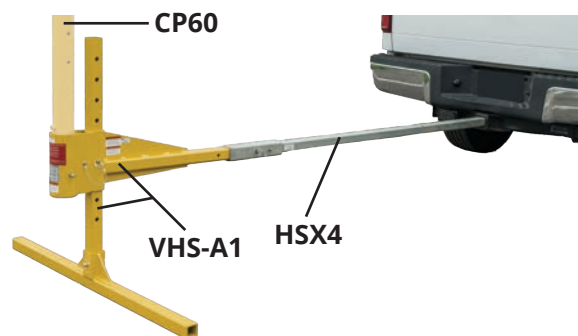


| Model | Description | Weight |
|---------------|--|---------|
| VHS-A1 | Vehicle hitch mount base | 48 lbs. |
| HSJ2 | Vehicle hitch receptacle attachment, multi-directional, plated steel | 9 lbs. |
| HSX2 | 2' extension bar for vehicle mount, plated steel | 31 lbs. |
| HSX4 | 4' extension bar for vehicle mount, plated steel | 33 lbs. |
| HSX6 | 6' extension bar for vehicle mount, plated steel | 35 lbs. |

The **RK-HS1** kit includes vehicle hitch mount **VHS-A1**, davit system **DK1824**, and multi-directional vehicle hitch receptacle **HSJ2**. The assembly also includes the standard Pelsue hoist mount bracket **MB-PF1**. Hoist is not included.

VHS-A1 allows you to use your vehicle as the davit base. The vehicle hitch mount connects with 2" square vehicle receivers. It is designed for a maximum 24" offset davit system. Use the VHS-A1 to reach difficult areas and drive right up to confined spaces.

Meets or exceeds OSHA and ANSI standards



FALL ARREST POST SYSTEMS

UNI-LITE PORTABLE FALL ARREST POST



UP TO 3 PERSON TIE-OFF LIGHTWEIGHT WORKS WITH PORTABLE & PERMANENT BASES

The Pelsue Uni-Lite Portable Fall Arrest Post is built to do the job with the least amount of hassle. Unlike most other fall arrest posts, which are built with heavy steel or aluminum, the Uni-Lite is constructed out of carbon fiber, allowing it to be easily lifted and positioned where you need it.

Acting in the same function as a fishing pole, the Uni-Lite Post absorbs much of the force of a fall by bending. Its patented design flexes with the force, making it the perfect rescue and retrieval device.

The Uni-Lite Portable Fall Arrest Post is intended to provide an elevated fall arrest anchorage for up to three persons. The upper insert features a 360° swivel tie-off with three 5.8' high anchor points.

Base plates are required for this unit. All compatible base plates can be found on [page 56](#).

Meets or exceeds OSHA and ANSI standards



**Tri-Ring
Steel Anchor**

Model
FT-C70

Dimensions
9" D x 6' H

Weight
39 lbs.

**Recommended
Accessories**
TFAT-14C (pg. 54)
122870-001 (pg. 54)

REV. 05.15.2020

UNI-LITE POST ACCESSORIES

The Pelsue TFAT-14C is an expandable base accessory for the Uni-Lite Portable Fall Arrest Post. With the TFAT-14C, the Uni-Lite Post can have up to a 14' high anchor point. It is a great accessory to adding additional functionality to the Uni-Lite Portable Fall Arrest Post for applications where the mounting location requires a higher anchor point.

The TFAT-14C is only rated for a single person tie-off and is man rated to 310 lbs. It can only be used with the Uni-Lite Fall Arrest Post and is not rated use alone, or with any other upper insert.

Meets or exceeds OSHA and ANSI standards

Compatible base plates: **FB-SW1, FB-SB1, FB-SW3, FB-SB3, FB-BT1, FB-RB1, FB-RW1, FB-FM1**, and **BC-16S** (pg. 56).

| Model | Description | Weight |
|-------------------|--|-----------|
| TFAT-14C | Fall arrest post accessory, telescopic, single person tie-off, aluminum 10' - 14' H | 75 lbs. |
| 500573-BD1 | Post assembly | 10.5 lbs. |
| 500019-001 | FT-C70 base | 28.5 lbs. |
| 122870-001 | Carrying case for FT-C70 | |

500573-BD1
(Post Assembly)



TFAT-14C with
Uni-Lite Post



TFAT-14C

VEHICLES

TENTS

**FALL
PROTECTION**

VENTILATION

**MANHOLE
EQUIPMENT**

EXPANDABLE FALL ARREST POST



TFAT-11A with
BC-16S in application

The Expandable Fall Arrest Post is a great alternative to the Uni-Lite Portable Fall Arrest Post. The post, using a pin attachment, can raise from 7' to 11' for greater functionality, where the mounting location may require a higher anchor point.

The Expandable Fall Arrest Post is a standalone system which provides a single person tie-off and doesn't require any additional accessories to expand the height of the post.

The system is man rated to 310 lbs.

Meets or exceeds OSHA and ANSI standards

Compatible base plates: **FB-SW1, FB-SB1, FB-SW3, FB-SB3, FB-BT1, FB-RB1, FB-RW1, FB-FM1**, and **BC-16S** (pg. 56).

| Model | Description | Weight |
|-----------------|--|---------|
| TFAT-11A | Telescopic post, single person tie-off, aluminum, 7' - 11' H | 75 lbs. |

POLE HOISTS

The Pelsue Pole Hoist is great for rescue & retrieval applications, especially where horizontal entry is required. The system works just like a fishing pole.

Each model is expandable. It comes complete with a hoist bracket (hoist sold separately). An optional adjustable aluminum T-Bar leg is available for extra stability.

| Model | Description | Weight |
|---------------|---------------------------------------|---------|
| PHF305 | Fixed head, 3' - 5' adjustable reach | 12 lbs. |
| PHF507 | Fixed head, 5' - 7' adjustable reach | 14 lbs. |
| PHF610 | Fixed head, 6' - 10' adjustable reach | 17 lbs. |
| PHFTBL | "T" bar legs - stabilization | 9 lbs. |



PHF507

REV. 05.15.2020

POST BASE PLATES

| Model | Description | Weight |
|-----------------|---|-----------|
| FB-SW1 | Weld-on base plate | 12 lbs. |
| FB-SB1 | Bolt-on base plate | 16.5 lbs. |
| FB-SW3 | Weld-on base plate with tie-off anchor | 12 lbs. |
| FB-SB3 | Bolt-on base plate with tie-off anchor | 16.5 lbs. |
| FB-BT1 | Bolt-on base plate adapter | 17.2 lbs. |
| FB-RB1 | Round base plate for stud weld | 16 lbs. |
| FB-RW1 | Weld-on base plate with 12" round mounting ears | 16 lbs. |
| FB-FM1 | Bolt-on base plate, first person up anchor | 13 lbs. |
| BC-14S | Beam clamp base - adjustable, 4" - 14" for I-Beam | 31 lbs. |
| BC-16S | Beam clamp base - adjustable, 8.75" - 16" for I-Beam | 40 lbs. |
| BC-08A | Beam clamp base - adjustable, 3.5" - 8" for C-Beam | 35 lbs. |
| SB-SM1 | Spider base, 4-arm manway mount, 19" arms, multi-position | 42.4 lbs. |
| SB-SM2 | Spider base, 4-arm manway mount, 12" arms, multi-position | 39.8 lbs. |
| RMBP-47 | Rail-mounted base plate 47" long bolt-on, railroad | 56 lbs. |
| RMBP-65 | Rail-mounted base plate, 65" long bolt-on, railroad | 91 lbs. |
| AP01 | Tie-off, bolt-on base plate - zinc plated | 1 lb. |
| AC-28R | Anchor clamp - 16" - 28" | 55 lbs. |
| AC-28RX | Anchor clamp - 16" - 28", hex drive | 55 lbs. |
| AC-34R | Anchor clamp - 19" - 34" | 59 lbs. |
| AC-34RX | Anchor clamp - 19" - 34", hex drive | 59 lbs. |
| AC-34RXP | Anchor clamp - 19" - 34" round manways | 57 lbs. |



FB-SW1



FB-SB3



BC-14S



SB-SM1



Uni-Lite Fall Arrest Post with AC-34RX in application

— Popular Choice

POST BASE COMPATIBILITY

FT-C70: All bases can be attached

TFAT-14C: All FB bases and BC-16S

TFAT-11A: All FB bases and BC-16S

VEHICLES

TENTS

FALL
PROTECTION

VENTILATION

MANHOLE
EQUIPMENT

RESCUE TRIPOD & ACCESSORIES

The Pelsue Rescue Tripod is designed for rescue applications. The telescoping aluminum legs allows for height adjustments in 5" increments. The legs can be adjusted to any angle to meet demanding rescue applications.

The Rescue Tripod is rated to support a single user, up to 310 lbs., including tools, belts, etc. The user can be supported using the built-in pulley, or one of the 3 anchor points, which have been proof rated to 5000 lbs. in accordance with OSHA standards.

| Model | Description | Weight |
|-------------|---|---------|
| RT07 | Maximum height 7', with built-in cable pulley | 44 lbs. |
| P054 | Maximum height 11' with built-in cable pulley | 65 lbs. |
| P057 | Heavy-duty carrying case for 7' Tripod RT07 | 3 lbs. |
| P058 | Heavy-duty carrying case for 11' Tripod P054 | 4 lbs. |

Suggested Hoists/SRL's

- PSRL1125-TR (pg. 60) and MB-FST (pg. 62)
- PSRL1350-SST (pg. 61)



2-IN-1 FEET

Pointed tip to dig into soft surfaces when tilted up and skid resistant pad when laid flat.



Locking Legs

Legs lock into position with locking pins and then fold up for easy carry.



P058 Carrying Case

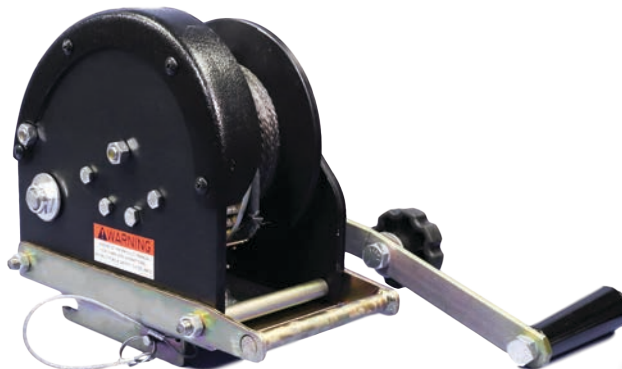
REV. 05.15.2020

HOISTS

PERSONNEL HOISTS

The Pelsue Personnel Hoists are designed and tested as retrieval and lifting devices as defined in OSHA Safety Standards for attaching a person that is entering or exiting a confined space.

The Personnel hoists are made in Colorado with the highest quality materials to ensure the system will provide you years of service.



| Model | Description | Weight |
|-------|----------------------------|---------|
| PH07C | 70' stainless steel cable | 25 lbs. |
| PH10C | 100' stainless steel cable | 30 lbs. |
| PH15C | 150' stainless steel cable | 32 lbs. |
| PH20C | 200' stainless steel cable | 39 lbs. |
| PH30C | 300' stainless steel cable | 43 lbs. |
| PH07R | 70' Technora® rope | 21 lbs. |
| PH10R | 100' Technora® rope | 26 lbs. |
| PH15R | 150' Technora® rope | 29 lbs. |

Hoist can be included with a tripod bracket by adding "T" after "PH" in the model.

Example: PHT07C

Features:

- Man rated to 310 lbs.
- Secondary "overspeed" brake
- 5.5:1 gear ratio single speed drive
- Retrieval rate of 23' per minute
- Double pawls on friction brake provide back-up safety
- Low wear, high temperature brake pads require minimal maintenance
- Anti-friction drive bearings assure trouble free life in continuous use
- Continuous braking drive prevents freewheeling
- Three permanent wraps of cable on the drum to assure low cable attachment loads
- Tensioner pad prevents loosening of cable lays
- Slip clutch drive prevents back winding of cable drum
- Zinc-plated and anodized aluminum components reduce corrosion in harsh environments
- Can be quickly and easily mounted
- Available with stainless steel cable or Technora® rope
- Removable drive handle with speeder knob
- Gear teeth cover
- Soft-sided carrying case included (**BGW3** pg.63)

VEHICLES

TENTS

FALL
PROTECTION

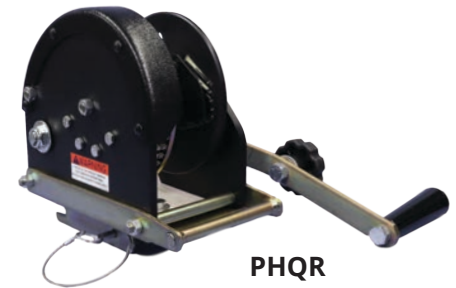
VENTILATION

MANHOLE
EQUIPMENT

QUICK RESCUE HOISTS

| Model | Description | Weight |
|------------------|---|---------|
| PHQR | No rope, hoist only | 22 lbs. |
| PHQRR | Reverse winding, no rope, hoist only | 22 lbs. |
| PHQR-T45 | 45' Technora® rope and ANSI Z359 swivel snap hook | 22 lbs. |
| PHQRR-T45 | Reverse winding with 45' Technora® rope and ANSI swivel snap hook | 22 lbs. |
| PHQR-X45 | 45' Technora® rope and wichard hook | 22 lbs. |
| PHQRR-X45 | Reverse winding with 45' Technora® rope and wichard hook | 22 lbs. |
| PHQR-T70 | 70' Technora® rope and ANSI Z359 swivel snap hook | 22 lbs. |
| PHQRR-T70 | Reverse winding with 70' Technora® rope and ANSI swivel snap hook | 22 lbs. |

The Pelsue Quick Rescue Hoist is unique in its design where the Technora® rope isn't permanently affixed to the hoist drum. This special feature allows users to quickly attach a rescue line to confined space entrants in need of rescue by using the Pelsue Rescue Pole (pg. 63). Once the entrant is attached to the rescue line, the rope can be wrapped around the hoist drum and secured on the hoist cleat for quick rescue.



PHQR

Features:

- Man rated to 310 lbs.
- Secondary "overspeed" brake
- 5.5:1 gear ratio single speed drive
- Retrieval rate of 23' per minute
- Double pawls on friction brake provide back-up safety
- Low wear, high temperature brake pads require minimal maintenance
- Anti-friction drive bearings assure trouble free life in continuous use
- Continuous braking drive prevents freewheeling
- Tensioner pad prevents loosening of cable lays
- Slip clutch drive prevents back winding of cable drum
- Zinc-plated and anodized aluminum components reduce corrosion in harsh environments
- Can be quickly and easily mounted
- Removable drive handle with speeder knob
- Gear teeth cover
- Soft-sided carrying case included (**BGW3** pg. 63)

EQUIPMENT HOISTS

| Model | Description | Weight |
|--------------|--|---------|
| WH07C | 70' stainless steel cable, for equipment only, maximum load 700 lbs. | 25 lbs. |
| WH07R | 70' of Technora® rope, for equipment only, maximum load 700 lbs. | 25 lbs. |



WH07C

REV. 05.15.2020

STANDARD SELF-RETRACTING LIFELINES (SRLs)

| Model | Description | Weight |
|--------------------|---|---------|
| PSRL1125-SS | 25' stainless steel cable and carabiner | 11 lbs. |
| PSRL1125-TR | 25' Technora® rope and carabiner | 9 lbs. |
| PSRL1150-SS | 50' stainless steel cable and carabiner | 20 lbs. |
| PSRL1150-TR | 50' Technora® rope and carabiner | 18 lbs. |

Features:

- Meets or exceeds OSHA standards
- Fall arrest within 2'
- Stress indicator to warn user that unit has arrested a fall
- Continuous braking drive prevents freewheeling
- Internal components made of bronze, stainless steel, and aluminum
- Man rated up to 310 lbs.



Standard Self Retracting Lifelines (SRLs) are designed for use by construction workers, utility personnel, and maintenance repair employees needing on the job fall protection. They are also designed for confined space applications where fall protection and rescue & retrieval are extremely important.

When entering a confined space by ladder, fixed structure, or while being lowered mechanically by a man rated hoist, a worker must be attached to an independent lifeline for adequate fall protection.

Standard SRLs will only arrest a fall. They don't provide retrieval capabilities. If you are looking for retrieval capabilities as well as fall protection, the Pelsue 3-Way SRLs (pg. 61) can be used for retrieval in the event of an emergency. You can also pair a Pelsue Standard SRL with a Pelsue Personnel Hoist to gain retrieval capabilities with the LifeGuard, Davit, and Tripod systems.

Pelsue's SRLs meet or exceed OSHA requirements for confined space rescue.

VEHICLES

TENTS

FALL
PROTECTION

VENTILATION

MANHOLE
EQUIPMENT

3-WAY SELF-RETRACTING LIFELINES (SRLs)

| Model | Description | Weight |
|---------------------|--|---------|
| PSRL1350-SS | 3/16" x 50' stainless steel cable | 32 lbs. |
| PSRL1350-TR | 1/4" x 50' Technora® rope | 32 lbs. |
| PSRL1350-SSB | 3/16" x 50' stainless steel cable with MB-FSB adapter bracket | 32 lbs. |
| PSRL1350-SST | 3/16" x 50' SS cable and MB-FST adapter bracket | 32 lbs. |
| PSRL1350-TRB | 1/4" x 50' Technora® rope with MB-FSB adapter bracket | 32 lbs. |
| PSRL1350-TRT | 1/4" x 50' Technora® rope with MB-FST adapter bracket | 32 lbs. |



PSRL1350-TRB

If a worker slips or falls, the 3-Way SRL locks up to arrest the fall. The system can then be activated into winch mode, raising or lowering the worker to safety. The 3-Way is different than the standard SRL by adding retrieval/descender capabilities.

SRLs are extremely important in fall protection and rescue & retrieval applications. When entering a confined space by ladder, fixed structure, or while being lowered mechanically by a man-rated hoist, a worker must be attached to an independent lifeline for adequate fall protection.

Pelsue's SRLs meet or exceed OSHA requirements for confined space rescue.

Features:

- Fall arrest within 2 ft.
- Retrieval capabilities in the case of an emergency
- Stress indicator to warn user that unit has arrested a fall
- Man rated up to 310 lbs.

WARNING

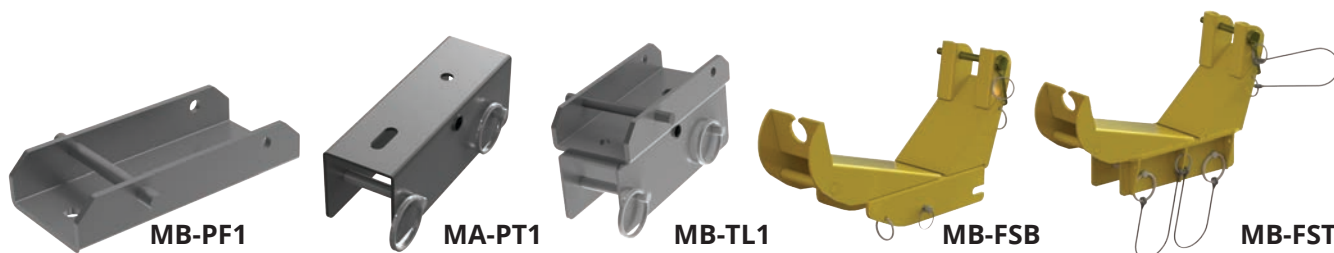
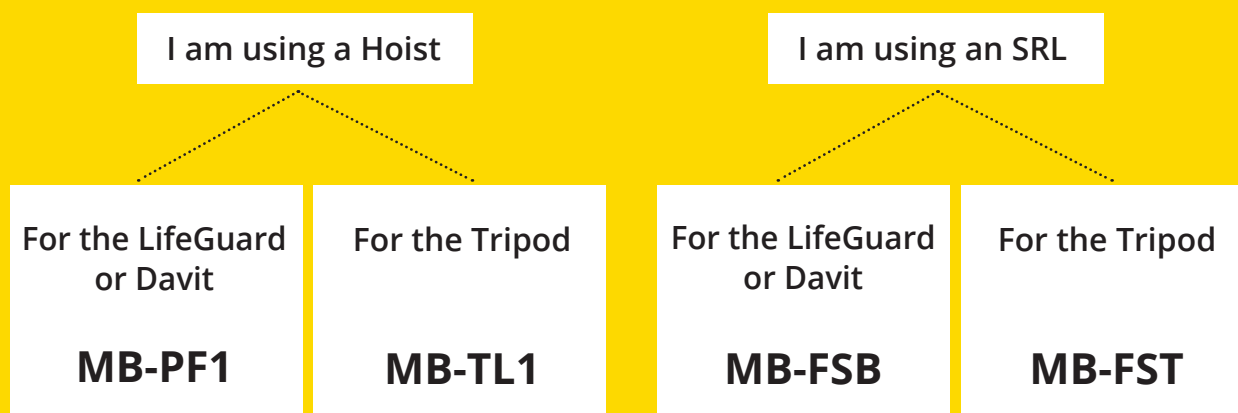
- Under no circumstances should the 3-Way be used for routine raising and lowering (use a man-rated Personnel hoist for raising and lowering **(pg.58)**)
- 3-Way needs to be recertified every 3 years unless it is used in arresting a fall, then it must be replaced immediately

HOIST ADAPTER BRACKETS

The MB Series brackets are required to mount hoists, SRLs, and 3-Way devices to the LifeGuard (pg. 45), Davit Retrieval System (pg. 47), or Tripod (pg. 57).

| Model | Description |
|---------------|--|
| MB-PF1 | Standard quick-connect bracket for Personnel hoists, for the LifeGuard and Davit System |
| MA-PT1 | Hoist adapter to use in conjunction with MB-PF1 , to connect Personnel hoists to tripod |
| MB-TL1 | Standard quick-connect bracket, to connect PH Series Hoists to Pelsue Tripod (includes MB-PF1 & MA-PT1) |
| MB-FSB | Bracket to attach all SRLs to MB-PF1 |
| MB-FST | Bracket to attach all SRLs to Tripod |

WHAT BRACKET DO I NEED?



RESCUE POLE

| Model | Description |
|------------|----------------------------|
| HSK1 | Rescue Pole & Clip |
| 501231-001 | Rescue Pole |
| 500989-001 | Rescue Clip |
| 500996-W45 | 45' rope with wichard hook |



The Pelsue Rescue Pole is designed for quick, non-entry rescues in confined spaces. It can be used for single person operation for distances of 5' up to 16' 9". It works with the Pelsue Quick Rescue Hoists (pg. 59).

The Rescue Pole is made of tough, durable fiberglass. The pole features a voltage rating of 100,000 volts per foot per 5 minutes.

Wichard hook and rope not included.



SAFETY ACCESSORIES

| Model | Description |
|----------|---|
| PA01 | Kit, Pulley P025 with auto-lock carabiner P137 |
| P025 | Pulley, cable ready, 2 1/2" aluminum sheave, stainless steel plates |
| P137 | Carabiner, steel, with auto-lock, Z359 compliant |
| PWX1800S | Utility Full Body Harness, small, Class III |
| PWX1800M | Utility Full Body Harness, medium, Class III |
| PWX1800L | Utility Full Body Harness, large, Class III |
| PWX1800X | Utility Full Body Harness, extra-large, Class III |
| PWX1705 | Adjustable Medium to Large Harness |
| BGW3 | Carrying bag which fits all hoists and SRLs |

Pelsue Harnesses

Perfect for maintenance and construction workers. Pelsue harnesses feature adjustable shoulder, leg, and full waist straps, a sliding D-ring in the center of the back, all in a light weight, high strength synthetic webbing construction.



REV. 05.15.2020

VENTILATION



HEATER
1590

MADE IN

COLORADO

BLOWERS & VENTILATORS

AXIAL BLOWERS

THERMOPLASTIC BODY

**1/3 HP
120 VAC**

**1/4 HP
12 VDC**

Models:

1325P

1400P

Power:

Electric - 1/3 HP,
120 VAC, 3 amps

Electric - 1/4 HP
12 VDC, 15 amps

Certifications:

CSA, CEESI

CEESI

Dimensions:

18" L x 14" W x 15" H

18" L x 14" W x 15" H

Weight:

17 lbs.

17 lbs.

Free Air (certified):

1,004 cfm

814 cfm

with one 90° bend:

586 cfm

478 cfm

with two 90° bends:

555 cfm

479 cfm

Housing:

Thermoplastic

Thermoplastic

Static Pressure:

2.10" W.C.

1.20" W.C.

Air flow certified by **CEESI** with an 8" x 15' collapsible duct.



1325P



BLOWER WITH CANISTER

**1/3 HP
120 VAC**

**1/4 HP
12 VDC**

Models:

1375P & 1385P

1475P & 1485P

Power:

Electric - 1/3 HP,
120 VAC, 3 amps

Electric - 1/4 HP,
12 VDC, 15 amps

Certifications:

CSA, CEESI,

CEESI

Dimensions:

37" L x 13" W x 14.5" H

37" L x 13" W x 14.5" H

Weight:

36 lbs.

36 lbs.

Static Pressure:

1.87" W.C.

1.20" W.C.

Duct Hose Comparison:

1375P

1385P

1475P

1485P

Included Duct Hose:

15' hose

25' hose

15' hose

25' hose

Certified Air Flow:

with one 90° bend:

575 cfm

541 cfm

478 cfm

439 cfm

with two 90° bends:

546 cfm

544 cfm

479 cfm

432 cfm

Air flow certified by **CEESI** with an 8" x 15' & 25' collapsible duct.



1375P

REV. 05.15.2020

STEEL BODY**1/3 HP
120 VAC****1/4 HP
12 VDC**

| Models: | 1325D |
|---|---------------------------------------|
| Power: | Electric - 1/3 HP, 120 VAC, 3 amps |
| Certifications: | CSA, CEESI |
| Dimensions: | 14.5" L x 13" W x 14.5" H |
| Weight: | 19.5 lbs. |
| Free Air (certified): | 1,004 cfm |
| with one 90° bend: | 586 cfm |
| with two 90° bends: | 555 cfm |
| Housing: | Formed steel |
| Static Pressure: | 2.05" W.C. |
| Air flow certified by CEESI with an 8" x 15' collapsible duct. | |

| 1400D |
|---|
| Electric - 1/4 HP 12 VDC, 15 amps CEESI |
| 14.5" L x 13" W x 14.5" H 16.5 lbs. 922 cfm 541 cfm 518 cfm |
| Formed steel 1.46" W.C. |

**1325D****BLOWER WITH
CANISTER****1/3 HP
120 VAC****1/4 HP
12 VDC**

| Models: | 1375D & 1385D | | 1475D & 1485D | |
|---|---------------------------------------|--------------|---------------------------------------|--------------|
| Power: | Electric - 1/3 HP, 120 VAC, 3 amps | | Electric - 1/4 HP, 12 VDC, 15 amps | |
| Certifications: | CSA, CEESI, | | CEESI | |
| Dimensions: | 37" L x 13" W x 14.5" H | | 37" L x 13" W x 14.5" H | |
| Weight: | 40 lbs. | | 40 lbs. | |
| Static Pressure: | 2.09" W.C. | | 1.46" W.C. | |
| Duct Hose Comparison: | 1375D | 1385D | 1475D | 1485D |
| Included Duct Hose: | 15' hose | 25' hose | 15' hose | 25' hose |
| Certified Air Flow: | | | | |
| with one 90° bend: | 586 cfm | 588 cfm | 541 cfm | 492 cfm |
| with two 90° bends: | 555 cfm | 553 cfm | 518 cfm | 490 cfm |
| Air flow certified by CEESI with an 8" x 15' & 25' collapsible duct. | | | | |

**1375D**

SUPER AXIAL VENTILATORS



F124

STANDARD

Model HF124 (12")

Power: Electric - 1/2 HP TEAO
115 VAC, 8 amps

RPM: 3450

Dimensions: 13.25" D x 15" W x 15.5" H

Weight: 46 lbs.

Shroud cfm: 2750 cfm

Venturi cfm: 3700 cfm

EXPLOSION RESISTANT

Model HF124E (12")

Power: Electric - 1/2 HP TEAO
115 VAC, 8 amps

RPM: 3450

Dimensions: 13.25" D x 15" W x 15.5" H

Weight: 48 lbs.

Shroud cfm: 2750 cfm

Venturi cfm: 3700 cfm



F164

Model F164 (16")

Power: Electric - 1/3 HP TEAO
115/230 VAC,
5.8/2.9 amps

RPM: 1725

Dimensions: 13" D x 18.75" W x 19.25" H

Weight: 44 lbs.

Shroud cfm: 3200 cfm

Venturi cfm: 5200 cfm

Model F164E (16")

Power: Electric - 1/3 HP
HAZLOC
115/230 VAC,
5.8/2.9 amps

RPM: 1725

Dimensions: 13" D x 18.75" W x 19.25" H

Weight: 49 lbs.

Shroud cfm: 3200 cfm

Venturi cfm: 5200 cfm



F244

Model P244S (24")

Power: Electric - 1-1/2 HP
115/230 VAC, 20 amps

RPM: 1725

Dimensions: 18.75" D x 28" W x 28.5" H

Weight: 110 lbs.

Shroud cfm: 7790 cfm

Venturi cfm: 11,800 cfm

Model P244SE (24")

Power: Electric - 1-1/2 HP
115/230 VAC, 20 amps

RPM: 1725

Dimensions: 18.75" D x 28" W x 28.5" H

Weight: 115 lbs.

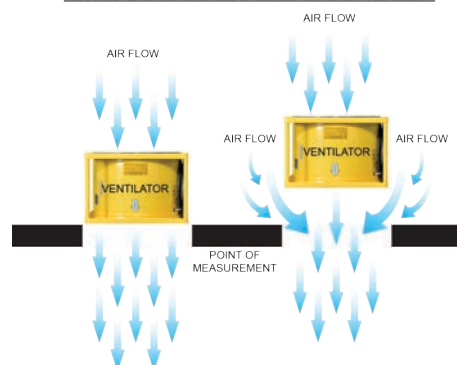
Shroud cfm: 7790 cfm

Venturi cfm: 11,800 cfm

SHROUD vs VENTURI

You will get more airflow by setting up your ventilator using the Venturi effect. As air is forced into a space, the surrounding air will also move into the space to equalize pressure, causing additional passive airflow. The attached diagram helps show the visualization of this effect.

SHROUD CFM vs VENTURI CFM



CENTRIFUGAL BLOWERS & VENTILATORS

ELECTRIC POWERED

VEHICLES
TENTS
FALL
PROTECTION

VENTILATION

MANHOLE
EQUIPMENT

Model 1000

| | |
|-----------------------|---|
| Power: | Electric - 1/3 HP 1725 RPM, 60 Hz 120 VAC, 6.2 amps |
| Certifications: | CSA, CEESI |
| Dimensions: | 14.63" W x 15.25" L x 15" H |
| Weight: | 35 lbs. |
| Free Air (certified): | 1068 cfm |
| with one 90° bend: | 924 cfm |
| with two 90° bends: | 807 cfm |
| Housing: | Formed steel |
| Static Pressure: | 2.27" W.C. |

Recommended Accessories

2015HRT (pg. 75)
3015P (pg. 74)



Model 1240 (2-speed ventilator)

| | Low | High |
|-----------------------|---|--|
| Power: | Electric - 1/3 HP 1140 RPM, 60 Hz 120 VAC, 7 amps | Electric - 1 HP 1725 RPM, 60 Hz 120 VAC, 12 amps |
| Certifications: | CSA, CEESI | CSA, CEESI |
| Dimensions: | 18.5" W x 18.5" L x 17.5" H | 18.5" W x 18.5" L x 17.5" H |
| Weight: | 54 lbs. | 54 lbs. |
| Free Air (certified): | 790 cfm | 1193 cfm |
| with one 90° bend: | 526 cfm | 810 cfm |
| with two 90° bends: | 506 cfm | 805 cfm |
| Housing: | Formed steel | Formed steel |
| Static Pressure: | 0.82" W.C. | 1.93" W.C. |



*All models can extract air with a built-in suction adapter

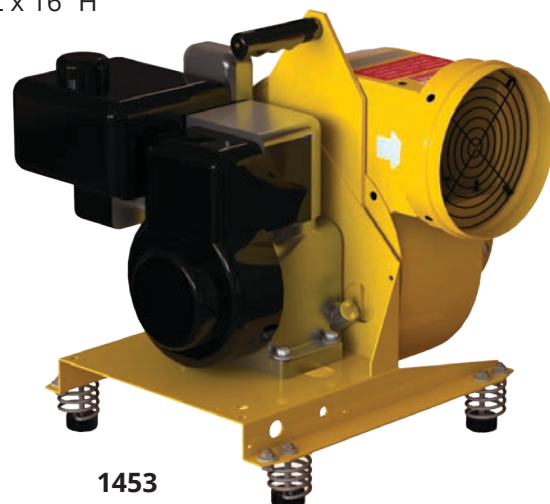
CENTRIFUGAL & HAZARDOUS BLOWERS & VENTILATORS

GASOLINE POWERED

| Models: | 1450 | 1453 |
|-----------------------|-------------------------------|-----------------------------|
| | (Briggs & Stratton) | (Honda) |
| Power: | Gasoline - 3.5 HP 3600 RPM | Gasoline - 4 HP 3600 RPM |
| Certifications: | CEESI | CEESI |
| Dimensions: | 15.25" W x 18.5" L x 16" H | 15.25" W x 18.5" L x 16" H |
| Weight: | 55 lbs. | 55 lbs. |
| Free Air (certified): | 1526 cfm | 1526 cfm |
| with one 90° bend: | 1360 cfm | 1360 cfm |
| with two 90° bends: | 1255 cfm | 1255 cfm |
| Housing: | Formed steel | Formed steel |
| Static Pressure: | 5.71" W.C. | 5.71" W.C. |

All air flows certified by **CEESI** using an 8" x 15' collapsible duct.

- *Certified up to 200' hose (900 cfm)*
- *Models available in diesel or compressed air, consult Pelsue for details*



1453

EXPLOSION RESISTANT



1000E

Model 1000E

| | |
|-----------------------|---|
| Power: | Single speed electric - 1/3 HP 1725 RPM, 60 Hz 120 VAC, 6.2 amps |
| Certifications: | CEESI |
| Dimensions: | 21" W x 15" L x 15" H |
| Weight: | 45 lbs. |
| Free Air (certified): | 1068 cfm |
| w/ one 90° bend: | 924 cfm |
| w/ two 90° bends: | 807 cfm |

*Plug is not provided with this product
(Please review "Hazardous Location Basics" on page 78-79)*

***All models can extract air with a built-in suction adapter**

CONFINED SPACE HEATERS

Model 1590

| | |
|-----------------------|-------------------------|
| Power: | 120 VAC, 4 amps |
| Certifications: | CSA, CEESI |
| Dimensions: | 14.5" W x 27" L x 14" H |
| Weight: | 47 lbs. |
| Free Air (certified): | 424 cfm |
| with one 90° bend: | 380 cfm |
| with two 90° bends: | 366 cfm |
| BTUs | 45,000 |
| Propane Usage: | 1.5 lbs./hr. |
| Included: | 10' LPG hose |

PROpane REQUIRED

*Available in European Voltage (50Hz)



All-In-One Heater & Blower in one single unit

Recommended Accessories

| |
|----------------------------|
| 2015HRT (Hose) (pg. 75) |
| 3025A (pg. 74) |
| 1590-F (Regulator) (pg.72) |



1590

Model 1590, one-piece, Axial Propane Heater/Blower, provides fresh, warm air. It is extremely efficient, requiring only 45,000 BTU's of input to get a 125° heat rise. Certified for ventilating confined spaces with or without heated fresh air ducts. This model is available in both North American and European voltages. **Propane usage chart on pg. 71.**

Model 1690D

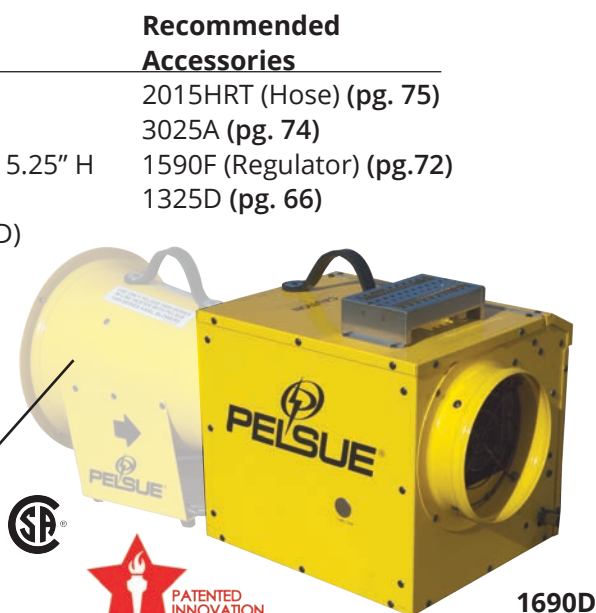
| | |
|---------------------|------------------------------|
| Power: | 120 VAC, 1 amp |
| Certifications: | CSA, CEESI |
| Dimensions: | 13.5" W x 18.5" L x 15.25" H |
| Weight: | 30 lbs. |
| Certified Air Flow: | (coupled with 1325D) |
| Free Air: | 639 cfm |
| with one 90° bend: | 532 cfm |
| with two 90° bends: | 498 cfm |
| BTUs | 70,000 |
| Propane Usage: | 2.25 lbs./hr. |
| Included: | 10' LPG hose |

PROpane REQUIRED

*Available in European Voltage (50Hz)



1325D
(Sold Separately)



1690D

Model 1690D, when coupled with the 1325D Axial Ventilator, provides fresh, warm air for all your confined space needs. This unit is propane fired and electrically powered. This requires the model 1325D Ventilator to operate. A Remote Thermostat Control (**Model 1625**) is also available. This model is available in both North American and European voltages. **Propane usage chart on pg. 71.**

VEHICLES

TENTS

FALL
PROTECTION

VENTILATION

MANHOLE
EQUIPMENT

TENT HEATERS

INFRARED HEATER

Model 1557

| | |
|-----------------------|------------------------------|
| Certifications: | CSA |
| Dimensions: | 9.5" W x 13" L x 20" H |
| Weight: | 13 lbs. |
| BTU's: | 8,000 - 16,000 |
| Propane Usage - low: | 0.25 lbs./hr. (low setting) |
| Propane Usage - high: | 0.50 lbs./hr. (high setting) |
| Included: | 10' LPG hose |

Recommended Accessories

1590-FB, 1st stage regulator (pg. 72)

Other Models

Description

| | |
|--------------|---|
| 1557B | Infrared Heater, 16,000 BTU propane with 20' LPG hose & regulator |
| 1557C | Infrared Heater 16,000 BTU, propane with 25' LPG hose & regulator |
| 1557D | Infrared Heater, 16,000 BTU, propane, no LPG hose included |

The Model 1557 is a radiant style, portable, infrared construction heater. It is adjustable from 8,000 to 16,000 BTU's. This patented design provides clean, efficient heat for Pelsue work tents or any other ventilated space. Safety features include thermal sensor and tip over protection.

NO ELECTRICAL POWER REQUIRED



1557



Heater Propane Usage Chart

| Model | Heat Setting | PSI Input | LBS/hr | 20 lb Tank | BTU |
|-------|--------------|-----------|--------|------------|--------|
| 1557 | Low | 10 | 1/4 | 80 hrs | 8,000 |
| 1557 | High | 10 | 1/2 | 40 hrs | 16,000 |
| 1590 | Normal | 35 | 1 1/2 | 13 hrs | 45,000 |
| 1690D | Normal | 35 | 2 1/4 | 9 hrs | 70,000 |

Note: Results are based on in-house testing. Consumer results may vary.

REV. 05.15.2020

HEATER ACCESSORIES

VEHICLES

TENTS

FALL

PROTECTION

VENTILATION

MANHOLE
EQUIPMENT

| Model | Description |
|-------|-------------|
|-------|-------------|

| | |
|---------------|---|
| 1590-F | Regulator Filter Assembly - LPG, with excess flow POL |
|---------------|---|

Filter/Regulator/Gauge, is a compact unit that fits into the LP gas line behind the tank valve to filter out impurities and regulate the bottle pressure to a safe working pressure. The POL Excess Flow Valve will shut down fuel flow to down-stream equipment in the event of a regulator fire or ruptured hose. Hose lengths are available from 6' (1.82 m) to 25' (7.62 m).



| | |
|----------------|--|
| 1590-FB | Regulator Assembly - LPG, with full flow POL (reg. preset to 10 PSI) |
|----------------|--|



| | |
|-------------------|--|
| 1590-FB-20 | Regulator Assembly - LPG, with full flow POL (reg. preset to 10 PSI) with 20' hose |
|-------------------|--|



| | |
|---------------|--|
| 1591-F | Hose Assembly 1/4" X 6' with 9/16" threaded fittings |
|---------------|--|



| | |
|-------------|---|
| 1625 | Thermostat Assembly for heater with 6' cord |
|-------------|---|

For use with 1690D Heater. Allows heater to cycle on and off at user-adjusted temperatures while maintaining continuous, uninterrupted ventilation.



| | |
|-------------------|---|
| 107607-001 | Hose Assembly 1/4" X 10' with 9/16" threaded fittings |
|-------------------|---|



| | |
|-------------------|---|
| 109191-001 | Hose Assembly 1/4" X 20' with 9/16" threaded fittings |
|-------------------|---|

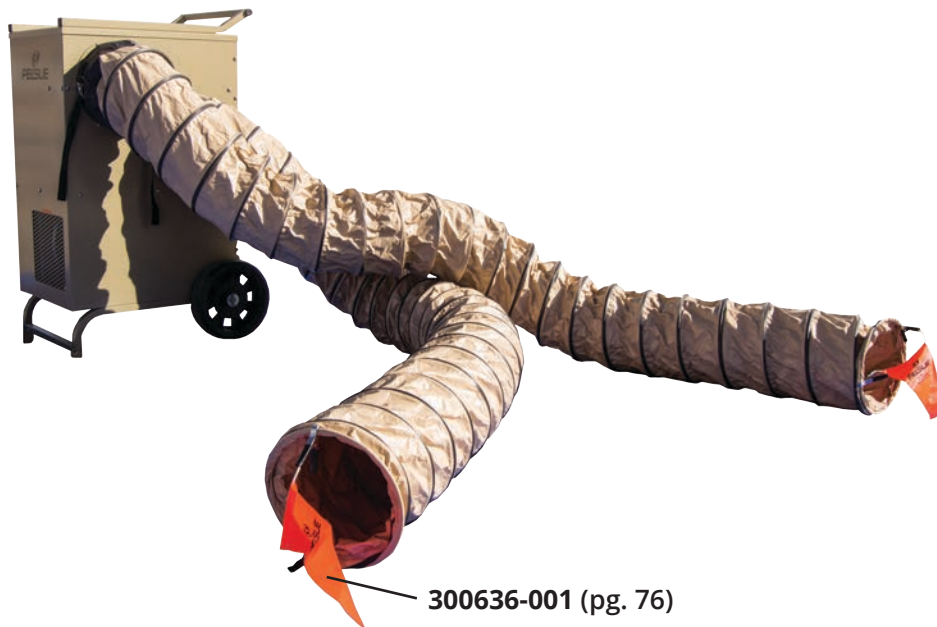


COOLING

ALL-IN-ONE PORTABLE GREAT TENT ADD-ON

The Pelsue 1.25-ton Portable Air Conditioner offers an easy, convenient, all-in-one system for air conditioning, air cooling, dehumidifying, and portable heating. The system is completely self-contained and has wheels for easy portability, or can be affixed to a work vehicle.

The portable air conditioner is the perfect add-on for the Pelsue All-Weather Fiber Splicing Tent (pg. 38). When temperatures outside are scorching, the unit can easily keep the tent cool, so you can stay focused on the task at hand.



These units have been tested in the most rigorous conditions, with over 1,000 units being deployed to support U.S. Army Special Forces in Iraq, Afghanistan, and Northern Africa.

For larger A/C needs, Pelsue offers 2.0-ton and 3.0-ton models.

All models come with two 10' hoses.

| Model | Description | Heating/Cooling | Weight | Dimensions |
|--------|--------------|-----------------|----------|----------------------------|
| SS125T | 1.25 ton ECU | 15,000 BTU/H | 191 lbs. | 21.5" W x 25" L x 39.25" H |
| SS200T | 2.0 ton ECU | 24,000 BTU/H | 270 lbs. | 28" W x 43" L x 40" H |

REV. 05.15.2020

BLOWER HOSES & DUCTS

VEHICLES

TENTS

FALL

PROTECTION

VENTILATION

MANHOLE

EQUIPMENT

AIRPAC SERIES

| Model | Description |
|----------|--|
| AIRPAC15 | Plastic canister with 15' hose, attaches to P-Series blowers |
| AIRPAC25 | Plastic canister with 25' hose, attaches to P-Series blowers |

AIRPAC SERIES

The AIRPAC series is a molded polyethylene canister and hose combination, which attaches to the 1325P & 1400P ventilators (pg. 65) The AIRPAC15 includes a 15' hose. The AIRPAC25 includes a 25' hose. Add the letter "S" to the end of the model number to include the "Spacemaker" hose.

AIRPAC15, AIRPAC25



BLOWER HOSE CARRIERS

| Model | Description |
|--------|---|
| CADDY | Aluminum hose caddy for HRT, HD, & EX hoses |
| 3005A | Steel hose caddy for HRT & HD Hoses |
| 3015P | Plastic canister with handle for hose storage |
| 3025A | Metal canister with lid for "HRT" style hoses & 2015HD hose |
| 3035A | Metal canister with lid for "N" style hoses & 2025HD hose |
| 3135A | Metal canister with lid for 2025N |
| 3015P1 | Hose canister, open both ends, 22" long, plastic |

8" HOSES

8" DIAMETER: STANDARD

| Model | Description |
|--------------|---|
| 2006HRT | 8" D x 6' L retractable vent hose, tension strap on one end |
| 2015HRT | 8" D x 15' L retractable vent hose, tension strap on one end |
| 2025HRT | 8" D x 25' L retractable vent hose, tension strap on one end |
| SPACEMAKER15 | 8" D x 15' L HRT hose with retractable midsection tension strap on one end |
| SPACEMAKER25 | 8" D x 25' L HRT hose with retractable midsection tension strap on one end |



Our SpaceMaker hose allows unrestricted, continuous ventilation during entry and exit of a confined space. There are no accessory parts. Stores in a regular hose canister. Hoses are 8" (20 cm.) in diameter and are available in 15' (4.57 m.) (model SpaceMaker15) or 25' (7.62 m.) (model SpaceMaker25) lengths. **Note: not for use with heated air above 250°F.**



8" DIAMETER: HEAVY DUTY

| Model | Description | Recommended Accessories |
|--------|---|-----------------------------|
| 2006-N | 8" D x 6' L insulated vent hose, tension strap on one end | |
| 2015HD | 8" D x 15' L heavy duty vent hose, tension strap on one end | |
| 2025HD | 8" D x 25' L heavy duty vent hose, tension strap on one end | |
| 2015-N | 8" D x 15' L insulated vent hose, tension strap on one end | 3035A Hose Carrier (pg. 74) |
| 2020-N | 8" D x 20' L insulated vent hose, tension strap on one end | |
| 2025-N | 8" D x 25' L insulated vent hose, tension strap on one end | 3135A Hose Carrier (pg. 74) |

8" DIAMETER: CONDUCTIVE

| Model | Description |
|--------|-----------------------------------|
| 2015EX | 8" D x 15' L conductive vent hose |
| 2025EX | 8" D x 25' L conductive vent hose |

They are supplied with cuff and attachment hardware and lug for grounding.



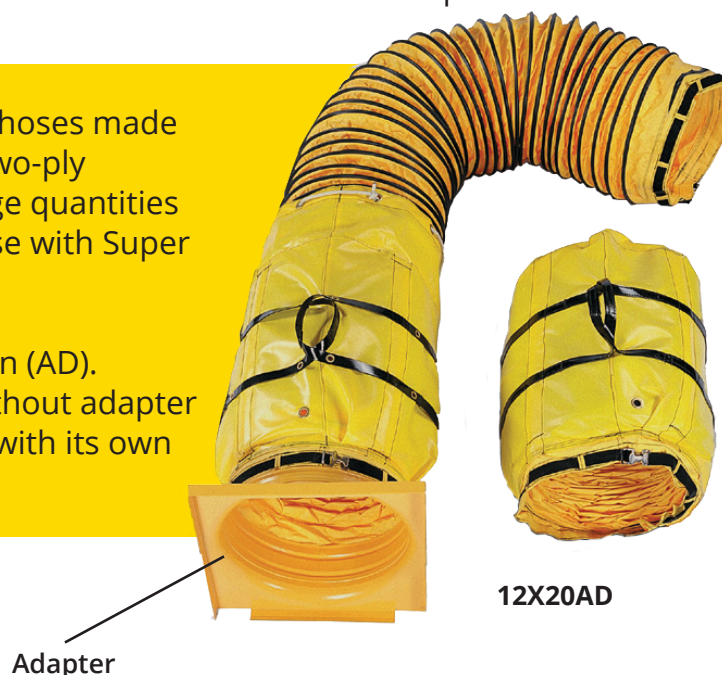
2015EX

AXIAL SPIRAL DUCTS

| Model | Diameter | Length | Description |
|-------------------|----------|--------|---|
| 12X20AD | 12" | 20' | Vent duct with adapter for HF124 blowers |
| 115669-001 | 12" | 20' | Vent duct without adapter |
| 16X20AD | 16" | 20' | Vent duct with adapter for F164 blowers |
| 115670-001 | 16" | 20' | Vent duct without adapter |
| 24X20AD | 24" | 24' | Vent duct with adapter for F244 blowers |
| 123592-001 | 24" | 24' | Vent duct without adapter |

Super Axial ducts are high quality hoses made with heavy-duty wear strips and two-ply construction. Ideal for moving large quantities of air into hard to reach places. Use with Super Axial Ventilators (pg. 67).

Available with an adapter as shown (AD). Extension pieces also available without adapter (RC2). Each duct comes complete with its own storage bag.



12X20AD

VENTILATION ACCESSORIES

| Model | Description |
|-------------------|--|
| 2100 | Hose-to-hose adapter, 8" D steel |
| 3003P | Suction adapter for 8" D hose for axial blowers 1325 & 1400 series |
| ADP-12 | Adapter for 12" D hose to SUPER12 blowers |
| ADP-16 | Adapter for 16" D hose to SUPER16 blowers |
| ADP-24 | Adapter for 24" D hose to SUPER24 blowers |
| PMA16-24 | Manhole adapter for SUPER16 to 24" manhole |
| PMA16-30 | Manhole adapter for SUPER16 to 30" manhole |
| 300636-001 | Flag - air flow, 10.76" W x 10.65" H, vent hose indicator |



2100

Our Hose-To-Hose Adapters, are easily installed to securely combine lengths of 8" or 12" diameter ventilator hoses.

Suction adapter attaches to the intake side of the 1325 & 1400 series ventilators, so that you may attach an 8" diameter hose to provide suction.



3003P

CABLE DRYING WINDBAG

The Pelsue Cable Drying Windbag can be used with any Pelsue heater or blower to dry wet cables quickly. The full-length zipper openings make installation of the Cable Drying Windbag easy, and allow for quick cable inspection. The permanently installed straps and buckles ensure a snug closure around the cable. Both models come with a carrying case (**7500**) as well as a hose-to-hose adapter (**2100**) (pg. 76).

Expansion sections are available for larger diameter cable, or for joining Windbags end-to-end. The Windbag's flame-resistant fabric meets CPAI-84 standards.

| Model | Description |
|-------|--|
| 7000 | Cable Drying Windbag with a steel hose-to-hose connector |
| 7100 | Expands the diameter of model 7000 by zipping to it, allowing it to wrap around larger cable bundles |
| 7300 | Same as model 7000 with the addition of zippers at each end, allowing the ability to join two together, end-to-end, includes a steel hose-to-hose connector |
| 7400 | Expands the diameter of model 7300 by zipping to it, allowing it to wrap around larger cable bundles, while maintaining the ability to join two together, end-to-end |
| 7500 | Carrying case for all model windbags |



REV. 05.15.2020

HAZARDOUS LOCATION BASICS

Hazardous Location

An area where the possibility of explosion and fire is created by the presence of flammable gases, vapors, dusts, fibers, or flyings.

Class I (NEC-500-5)

Those areas in which flammable gases or vapors may be present in the air in sufficient quantities to be explosive or ignitable.

Class II (NEC-500-6)

Those areas made hazardous by the presence of combustible dust.

Class III (NEC-500-7)

Those areas in which there are easily ignitable fibers or flyings present, due to type of material being handled, stored, or processed.

Division 1 (NEC-800-5, 6, 7)

Division One in the normal situation, the hazard would be expected to be present in everyday production operations or during frequent repair and maintenance activity.

Division 2 (NEC-500-5, 6, 7)

Division One in the abnormal situation, material is expected to be confined within closed containers or closed systems and will be present only through accidental rupture, breakage or unusual faulty operation.

Groups (NEC-500-3)

The gases and vapors of Class I locations are broken into four groups by the code A, B, C, and D. These materials are grouped according to the ignition temperature of the substance, its explosion pressure, and other flammable characteristics.

Class II-Dust locations-groups E, F, and G.

These groups are classified according to the ignition temperature and the conductivity of the hazardous substance.

Seals (NEC-501-5 & 502-5)

Special fittings that are required either to prevent the passage of hot gases in the case of an explosion in a Class I area or the passage of combustible dust, fibers, or flyings in a Class II or III area.

Articles 500 - 503 (1987 NEC)

Explains in detail the requirements for the installation of wiring or electrical equipment in hazardous locations. These articles along with other applicable regulations; local governing inspection authorities, insurance representatives, and qualified engineering/technical assistance should be your guides to the installation of wiring or electrical equipment in any hazardous or potentially hazardous location.

HAZARDOUS LOCATION BASICS

Typical Class I Locations:

- Petroleum refineries, and gasoline storage and dispensing area.
- Industrial firms that use flammable liquids in dip tanks for parts cleaning or other operations.
- Petrochemical companies that manufacture from gas and oil.
- Dry-cleaning plants where vapors from cleaning fluids can be present.
- Companies that have spraying areas where they coat products with paint or plastics.
- Aircraft hangers and fuel servicing areas.
- Utility gas plants, and operations involving storage and handling of liquefied petroleum gas or natural gas.

Typical Class II Locations:

- Grain Elevators, flour and feed mills.
- Plants that manufacture, use or store magnesium or aluminum powders.
- Plants that have chemical or metallurgical processes...producers of plastics, medicines, and fireworks, etc.
- Producers of starch or candies.
- Spice-grinding plants, sugar plants, and cocoa plants.
- Coal preparation plants and other carbon-handling or processing areas.

Typical Class III Locations:

- Textile mills, cotton gins, cottonseed mills, and flax processing plants.
- Any plant that shapes, pulverizes, or cuts wood and creates sawdust or flyings.

Note: Fibers and flyings are not likely to be suspended in the air, but can collect around machinery or on lighting fixtures and where heat, sparks, or hot metal can ignite them.

| CLASSES | DIVISIONS | GROUPS |
|---------------------|---------------|--------|
| Class I Gas | 1 Normal | ABCDE |
| Class II Dust | | |
| Class III Fibers | 2 Abnormal | EFG |

MANHOLE EQUIPMENT



Gas Monitor
P400GM

MADE IN

COLORADO

GAS MONITOR

IMMEDIATE DETECTION SYSTEM (IDS) 3 TYPES OF ALARMS: AUDIBLE, VISUAL, & VIBRATION RUGGED AND DURABLE

The Pelsue P400 Gas Monitor has a user-friendly design, large graphic display, and can be easily calibrated. With the Immediate Detection System (IDS), the optional tick feature will alert you when hazardous gas levels are on the rise, so you can correct the problem before the full alarm goes off.

The P400 provides three alarm types allowing you to notice and respond to the alarm quickly. The sensors are also not sensitive to humidity or temperature changes, so you won't get false readings when entering/exiting a confined space.

The housing is made of polycarbonate with a permanent rubber-like protective covering, making the P400 one of the most durable gas monitors on the market.

The gas monitor is proudly made in America.



Displays up to 4 Gases:

- LEL
- Oxygen
- Carbon Monoxide
- Hydrogen Sulfide



GAS MONITOR KITS

| Model | Description |
|---------------|---|
| PELCHEK-P400 | 4 gas IDS monitor, hand ASP pump, battery, battery recharger, case |
| PELCHEK-P400C | 4 gas IDS monitor, hand ASP pump, battery, battery recharger, case, calibration kit |
| PELCHEK-P401 | 4 gas IDS monitor, electric pump, battery, battery recharger, case |
| PELCHEK-P401C | 4 gas IDS monitor, electric pump, battery, battery recharger, case, calibration kit |
| P400-CAL | Calibration Kit - 34L quad mix bottle, regulator, H2S, LEL, CO, O2 |

REV. 05.15.2020

GAS MONITOR

ACCESSORIES

VEHICLES
TENTS
FALL
PROTECTION
VENTILATION

MANHOLE
EQUIPMENT

Model

Description

SCAL-P400

Station - 5 bay auto calibration,
includes SCAL-D software



P400GM

4 gas IDS monitor - no pump,
belt clip, calibration adapter, AA batteries



P400GMP

4 gas IDS monitor - with pump, belt clip
calibration adapter, AA batteries,
10' hose & probe



P400GMP-ASP

Aspirator hand pump - for use with
non-pump, calibration cup, 10' hose



REG-0.5

Regulator - calibration for gas monitors



ACMAX002

Gas - calibration, 34-liters, 25PPM H2S,
50% LEL, 100PPM, CO, 18.2% O2



P400GMP-HOSE

Kit for confined space entry, use with
pump, 10' hose, 1 male & 1 female luer



P400GMP-PUMP

Motorized pump with filter - 10' hose,
and probe (add-on or replacement)



P400-BATT

Rechargeable NiMH battery, with charger, for
use with pump & non-pump model



MANHOLE SHIELDS GUARDS, & LIFTERS

ALUMINUM MANHOLE SHIELDS

| Model | Description |
|----------|--|
| 2730-8A | Aluminum shield 27" diameter top, 30" diameter bottom, 8" H with tube |
| 2730-12A | Aluminum shield 27" diameter top, 30" diameter bottom, 12" H with tube |
| 3336-12A | Aluminum shield 33" diameter top, 36" diameter bottom, 12" H with tube |
| 2750 | Replacement inner tube for standard manhole shields |
| 2750LG | Tube Kit for standard manhole shields, with grommets and insert |
| 2760 | Molded fiberglass protection screen for shields |

*Custom Manhole Shield sizes available.



2730-8A



2730-12A



Shields are stackable



2730-8A
(Sold Separately)

Pel Protector (2760)

A lightweight, molded fiberglass protector for manhole shields. It protects workers from falling objects and debris, without obstructing ventilation or emergency escapes. The Pel Protector works on either 27" (68.5 cm.) or 30" (76 cm.) sides of standard manhole shields. It is lightweight and easily removable. Constructed with very strong fiberglass, it can hold the weight of an average man, yet only weighs 9.5 lbs. (4.3 kg.).

REV. 05.15.2020

MANHOLE COVER LIFTER

| Model | Description | Weight |
|-------|---|-----------|
| 2775 | One-piece cover lifter with ice scraper | 12.5 lbs. |
| 2775C | One-piece cover lifter with ice scraper and chain | 13 lbs. |

Model 2775

Weighing only 12.5 lbs. (5.6 kg.), the 2775 has a special handle to allow for a better grip. It is also designed to remove ice or dirt by using the built-in scraper.

This model features a heat-treated hook that can lift manhole covers which are equipped with a hole. The hook locks in the handle when not in use.

Model 2775C

Identical to model 2775, this model features a chain and hook, for more convenient and compact storage.



2775



2775C

MANHOLE GUARDS

| Model | Description | Dimensions | Weight | Material |
|--------|--------------------------|-------------------------------|---------|----------|
| 4000A | Guard with locking arms | 32.25" W x 42" H x 32.25" D | 39 lbs. | Steel |
| 4000AL | Guard with shield clamps | 31.375" W x 42" H x 32.375" D | 22 lbs. | Aluminum |



4000A



4000AL

The Pelsue Manhole Guard creates a rigid and highly visible traffic barrier around open manholes. It is designed to hold up to rigorous conditions. It can be quickly set up or collapsed down, and meets OSHA standards.

The **4000AL** clamps securely to a manhole shield, while the **4000A** is available with locking arms.

For fall protection and rescue & retrieval, view the LifeGuard System on (pg. 45).

MANHOLE PLANKS

| Model | Description |
|-------|---|
| 9504P | Clear grain hardwood, expandable from 4' - 6' |
| 9506P | Clear grain hardwood, expandable from 6' - 9.5' |



Manhole scaffold planks are constructed from strong hardwood with heavy-duty steel hardware and bolt-through construction. Safety latches are included on expandable units at both ends to prevent accidental opening.

WORK LAMPS

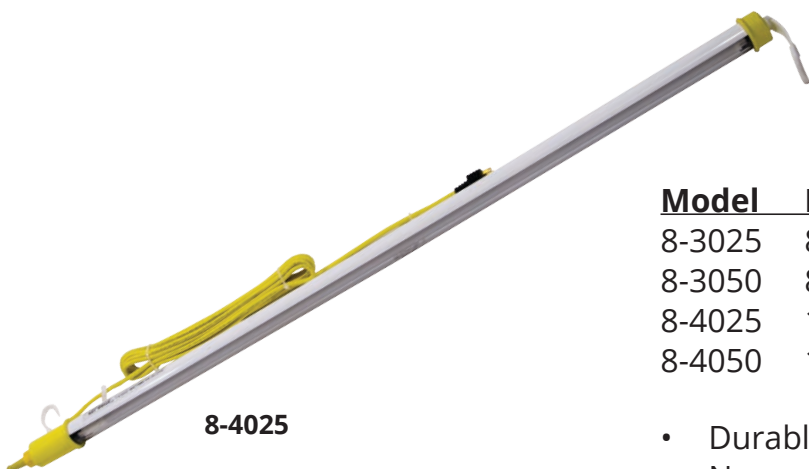
FLUORESCENT, 120 VAC



| Model | Description | Size |
|--------|-------------|-------------------|
| 8-1525 | 15 Watt | 26.5" L, 25' cord |
| 8-1550 | 15 Watt | 26.5" L, 50' cord |

- Shock resistant design stands up to drops, falls and rough handling
- Built-in reflectors for wide, shadowless illumination
- Non-metallic construction eliminates risk of energized external parts

LED, 120 VAC



| Model | Description | Size |
|--------|----------------------|-----------------|
| 8-3025 | 8 Watt, 900 Lumens | 28" L, 25' cord |
| 8-3050 | 8 Watt, 900 Lumens | 28" L, 50' cord |
| 8-4025 | 18 Watt, 1800 Lumens | 53" L, 25' cord |
| 8-4050 | 18 Watt, 1800 Lumens | 53" L, 50' cord |

- Durable, bright and energy efficient
- No mercury, RF interference, or UV radiation
- Rated up to 50,000 hours

REV. 05.15.2020

PUMPS & ACCESSORIES

SUBMERSIBLE PUMPS

PF2000 Series (Power-Flo)

| Models: | PF20111 | PF27112 | PF01311SCV |
|-------------------|--------------------|--------------------|--------------------|
| Discharge | 2.0" | 3.0" | 1.0" |
| Rated Output | 2.0 HP | 2.75 HP | 1.0 HP |
| Locked Rotor Amps | 92.4 amps | 52.6 amps | 42 amps |
| Full Load Amps | 23.3 amps | 12.5 amps | 12 amps |
| Voltage/Phase | 120V, Single phase | 230V, Single phase | 115V, Single phase |
| Pump Dimensions | 7.4" W x 18" H | 7.3" W x 18" H | 5.3" W x 18.3" H |
| Weight | 49.5 lbs. | 49.5 lbs. | 48 lbs. |
| Max. Head | 76 ft. | 50 ft. | 46 ft. |
| Maximum Capacity | 175 GPM | 300 GPM | 114 GPM |



PF20111

Ready Series (FLYGT)

| Models: | Ready-4 | Ready-8 |
|------------------|--------------------|-------------------|
| Discharge | 2.0" | 2.0" |
| Rated Output | 0.6 HP | 1.15 HP |
| Full Load Amps | 5.5 amps | 9.8 amps |
| Volts | 115V | 115V |
| Pump Dimensions | 7.3" W x 16.375" H | 7.3" W x 17.75" H |
| Weight | 20 lbs. | 25 lbs. |
| Maximum Capacity | 60 GPM | 90 GPM |



Ready-8

PM Series (Multiquip)

| Models: | PM-4010 | PM-4020 |
|------------------|--------------------|--------------------|
| Discharge | 2.0" | 2.0" |
| Rated Output | 0.5 HP | 1.0 HP |
| Starting Amps | 41 amps | 63 amps |
| Running Amps | 8 amps | 12.5 amps |
| Voltage/Phase | 115V, Single phase | 115V, Single phase |
| Pump Dimensions | 6.7" W x 18.4" H | 6.7" W x 20" H |
| Weight | 38 lbs. | 55 lbs. |
| Max. Head | 42 ft. | 55 ft. |
| Maximum Capacity | 85 GPM | 95 GPM |



PM-4010

VEHICLES

TENTS

PROTECTION

FALL

VENTILATION

MANHOLE
EQUIPMENT

CENTRIFUGAL TRASH PUMPS

| Models: | PM-QP2TH | PM-QP3TH |
|---------------------|--------------|--------------|
| Suction x Discharge | 2.0" x 2.0" | 3.0" x 3.0" |
| Max. Water Capacity | 211 GPM | 396 GPM |
| Max. Lift | 25 ft. | 25 ft. |
| Max. Head | 98 ft. | 95 ft. |
| Max. Pressure | 42.4 psi | 41.1 psi |
| Max. Solid Intake | 1.0" | 1.5" |
| Fuel Tank Capacity | 1.03 gallons | 1.58 gallons |
| Length | 26.9" | 28.7" |
| Width | 18.3" | 21.7" |
| Height | 20.3" | 23" |
| Weight | 97 lbs. | 142 lbs. |

Optional Wheel Kit **UWKA** available



PM-QP2TH



PM-QP3TH

DISCHARGE HOSES

| Model | Description |
|------------|--|
| 103171-002 | PVC discharge hose, 1.5" x 25', male/female couplers |
| 103172-002 | PVC discharge hose, 2.0" x 25', male/female couplers |
| 103174-002 | PVC discharge hose, 3.0" x 25', male/female couplers |
| 103176-002 | MILL SPEC hose, 1.5" x 25', male/female couplers |
| 103177-002 | MILL SPEC hose, 2.0" x 25', male/female couplers |
| 103179-002 | MILL SPEC hose, 3.0" x 25', male/female couplers |



103172-002

DUCT RODDERS

VEHICLES

TENTS

FALL

VENTILATION

PROTECTION

MANHOLE
EQUIPMENT

MINI DUCT RODDER

| Models | Length | Weight |
|--------|-------------|--------------------|
| 46100 | 1/4" x 100' | 16 lbs. (7.3 kg.) |
| 46200 | 1/4" x 200' | 19 lbs. (8.6 kg.) |
| 46300 | 1/4" x 300' | 22 lbs. (10 kg.) |
| 46400 | 1/4" x 400' | 25 lbs. (11.3 kg.) |

Developed for 1" or 2" (2.5 or 5 cm.) conduit and up to 400' (122 m.). The MINI rodder combines light weight and portability along with high rod strength. Pulling strength is rated at 2200 lbs. (998 kg.) while 12" to 18" (30 to 45 cm.) radius bends are easily negotiated. Especially effective for placement of wire or cable in interior building conduit.

46100



MIDI DUCT RODDER - MARKED

| Models | Length | Weight |
|---------|--------------|---------------------|
| 48200M | 3/8" x 200' | 70 lbs. (31.7 kg.) |
| 48400M | 3/8" x 400' | 85 lbs. (38.6 kg.) |
| 48600M | 3/8" x 600' | 100 lbs. (45.3 kg.) |
| 48800M | 3/8" x 800' | 120 lbs. (54.4 kg.) |
| 481000M | 3/8" x 1000' | 135 lbs. (61.2 kg.) |

Developed for 2" or 3" (5 or 7.6 cm.) conduit and up to 1000' (305 m.). The MIDI rodder combines mid-range lengths with high flexibility. Pulling strength is rated at 2800 lbs. (1270 kg.) while 18" to 24" (45 to 61 cm.) radius bends are easily negotiated. Especially effective in pulling electric cable, hoist rope, and midrange lengths of telecommunications cabling. M - Marked in feet.

48600M



MAXI DUCT RODDER - MARKED

| Models | Length | Weight |
|---------|---------------|---------------------|
| 49400M | 7/16" x 400' | 102 lbs. (46.2 kg.) |
| 49600M | 7/16" x 600' | 120 lbs. (54.4 kg.) |
| 49800M | 7/16" x 800' | 138 lbs. (62.6 kg.) |
| 491000M | 7/16" x 1000' | 157 lbs. (71.2 kg.) |
| 491200M | 7/16" x 1200' | 170 lbs. (77.1 kg.) |

Developed for 3" (7.6 cm.) or larger conduit and up to 1200' (366 m.). The MAXI rodder combines long range lengths with high superior strength. Pulling strength is rated at 3300 lbs. (1496 kg.) while 24" to 30" (61 cm. to 76 cm.) radius bends are easily negotiated. Especially effective in pulling heavy electrical and telecommunications cable in long runs. This is a domestic rod not containing the same fiber ratio as other sizes. M - Marked in feet.

49800M



DUCT RODDER ACCESSORIES

FIBERGLASS ROD

The Pelsue MINI and MIDI Duct Rodders use an innovative fiberglass rod which provides excellent flexibility and strength. The fiberglass rod design uses a high ratio of premium fiberglass, so it can make tight bends without breaking.

All the fibers are embedded together in elastic polyester resin and cross wrapped to form a compact bound core. It forms a wavy, highly resinous outer layer and reduces the surface tension produced when the rod is bent.

The fiberglass rods are designed to easily pass through narrow bends and are perfect for effective placement of wire and cable.



End Fitting Solid

Utilized on rod attached to spool. Provides greater side-loading capacity when rod is being reeled off.

Union Coupling

For joining two rodding units together outside the duct. Requires each rodder to be equipped with a swivel.

Basket Combination

For joining two rods together inside the duct. The minimum duct diameter requirement is 4".

End Fitting Swivel

Utilized on leading end of the rod, the swivel end fitting allows line being pulled in to twist and unwind.

Shackle

Combines with pulling eye, for use when the hoist line has a closed loop eye. Also used to connect to another rod with a shackle.

Roller Guide

Prevents end hang ups. Guides the rod over bumps, offsets, and around corners.

Pulling Eye

Eye is used to tie off hoist line, mule tape, or electrical conductors. Also utilized when shackle is required.

In-Line Repair Kit

Designed to repair damage inline on the rod.

Includes:

Instructions, adhesive, sand paper, and union coupler

End Repair Kit

Designed to repair damage at the end of the rod.

Includes:

Instructions, adhesive, sand paper, and both the swivel as well as the solid rod end.



Roller Guide



Pulling Eye



In-Line Repair Kit



End Repair Kit

| Accessories | MINI | MIDI | MAXI |
|--------------------|--------|--------|--------|
| End Repair Kit | 46001 | 48001 | 49001 |
| In-Line Repair Kit | 46002 | 48002 | 49002 |
| Pulling Eye | 46003 | 49003 | 49003 |
| End Fitting Swivel | 46004 | 48004 | 49004 |
| End Fitting Solid | 46004A | 48004A | 49004A |
| Union Coupling | 46005 | 49005 | 49005 |
| Roller Guide | 46006 | 49006 | 49006 |
| Shackle | 46007 | 49007 | 49007 |
| Basket Combination | N/A | N/A | 49008 |

REV. 05.15.2020

Commitment to Customer Care

At Pelsue, we understand that your time matters. We care about your questions and concerns, and when you contact us, you'll hear from someone based in Englewood, Colorado.

If there's a problem, we strive to fix it. If there's a question, we'd love to answer it. We've been around for over fifty years helping guide our customers to the right products, solving concerns, and making the customer experience a focal point of our business.

Choose a company that cares about you. Choose Pelsue.

Association

Pelsue is proud to be associated with the following organizations:



C.E.E.S.I.
Colorado Engineering & Experiment
Station



NATDA
North American Trailer
Dealers Association



CE
European Conformance Standards



NTEA
The Association for the
Work Truck industry



CSA
Canadian Standards Association



NATM
National Association of
Trailer Manufacturers



CAMA
Colorado Advanced Manufacturing
Association



Orion Registrar, Inc.
ISO Auditing & Certification



KOKOPELLI
Marketing Agency of Record
for Pelsue

All trademarks, product names, and company names or logos cited herein are the property of their respective owners and do not infringe any patent, trademark, copyright, license or any other proprietary right of any third party.



Since 1963, Pelsue has been enabling safe and productive work environments throughout the world. With a strong tradition of service, quality, and value, Pelsue is an industry leader in the design and manufacture of customized solutions for telecommunications, utilities, and other industries.

At Pelsue our commitment to quality is unrelenting. As a manufacturer of vehicles and equipment trusted by the military, the Department of Defense, utility and communication companies, and search and rescue organizations, quality isn't a talking point—it's our standard.

We will continue to support total customer satisfaction by maintaining our ISO 9001:2015 Quality Management System, and by promoting a customer-focused culture.

We make every business decision as though the part or service provided was destined for our own family's use.

Pelsue Company
2500 South Tejon Street
Englewood, Colorado 80110 USA
800-525-8460
pelsue.com



Due to Pelsue's commitment to quality, all information within this catalog is subject to change at any time. Please call Pelsue at 800-525-8460 if you have any questions.

©2020 T.A. Pelsue Company. All rights reserved