

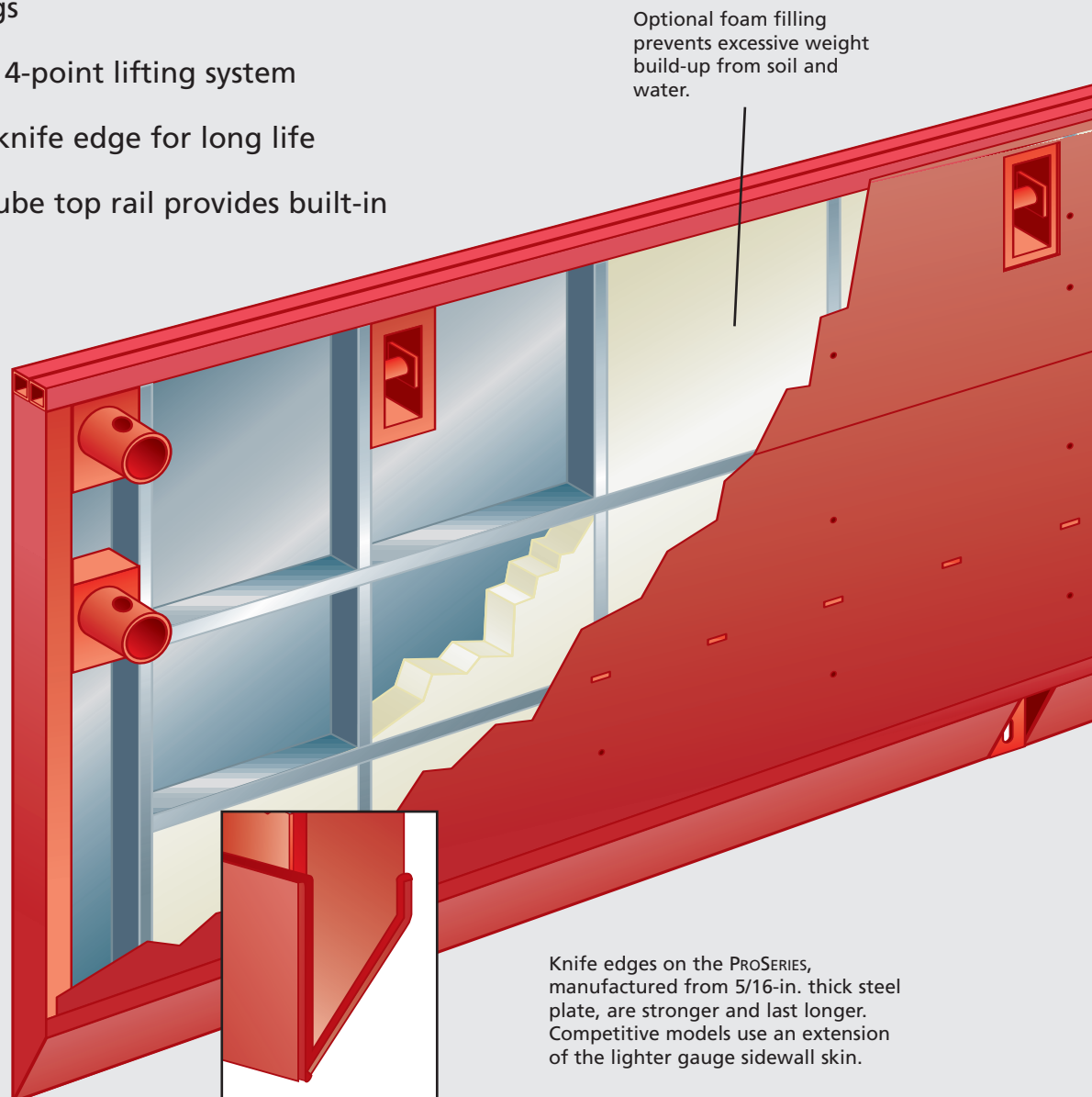


TRENCH SHIELDING AND SHORING

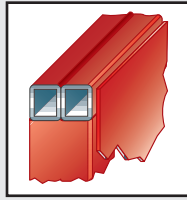


The ProSeries line of trench shields from PRO-TEC incorporates performance features that help deliver outstanding productivity and increased safety on the job.

- Greater depth ratings
- Industry's first, safer 4-point lifting system
- Industry's strongest knife edge for long life
- Full length double tube top rail provides built-in "I" beam strength
- Optional foam filling prevents soil and water build-up in sidewalls
- Extra strong recessed collars
- Professional engineer certified

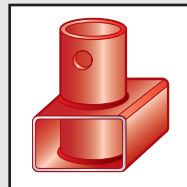


Full length double tube top rail provides built-in "I" beam strength, helps prevent bucket damage.

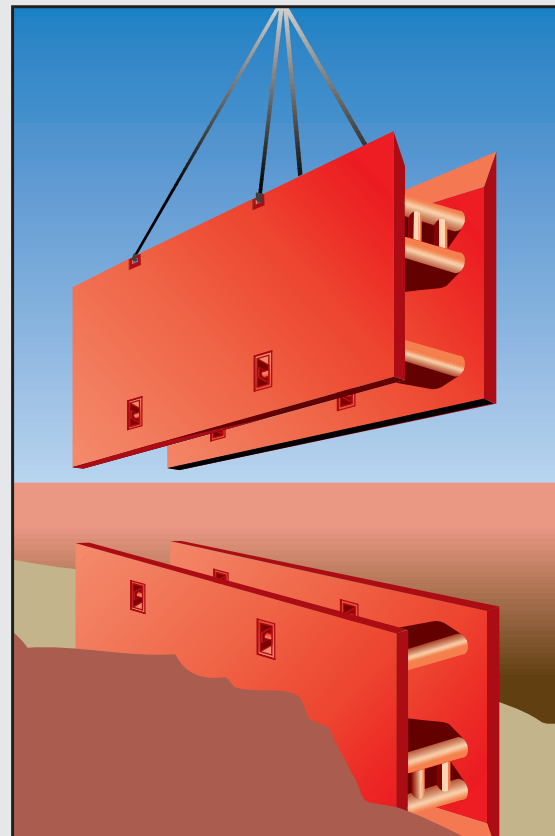
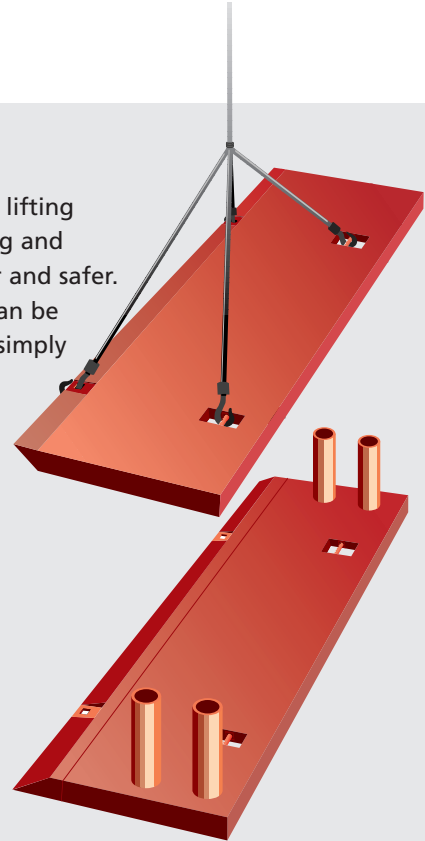


Superior structural strength provides greater durability and depth ratings. Additional horizontal and vertical structural members in the sidewall impart maximum shield strength and better depth ratings than competitive shields. High strength steel, Schedule 80 steel pipe spreaders and superior welding techniques complete the package.

Collars are encased in heavy wall tubing inserted between twin end posts. Collars are 100% perimeter welded to impart maximum durability to these critical connecting points.



Industry's first 4-point lifting system makes handling and assembly easier, faster and safer. For stacking, shields can be lifted with top down simply and easily.



WHAT YOU NEED WHEN YOU NEED IT

PRO-PLUS package

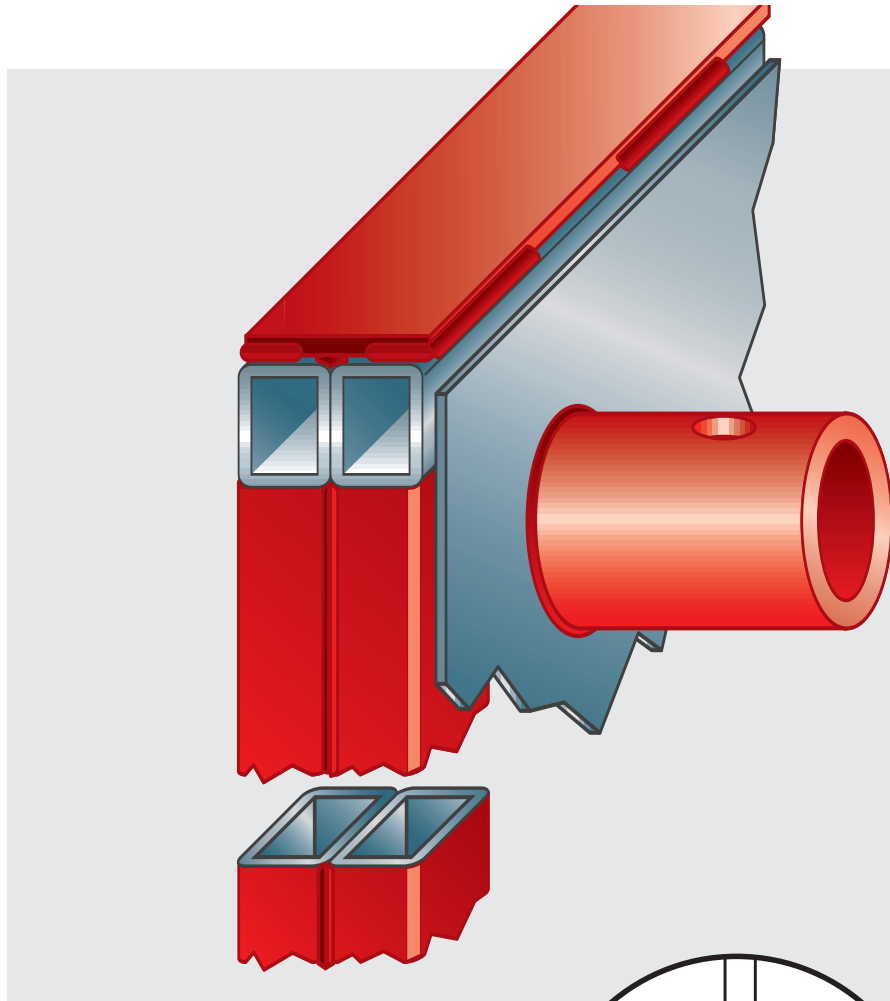
features extra durability at key stress points, which is ideal for heavy use and severe conditions.

- Excellent option for rental fleets
- Adds years of life to the shield

Full length 1/2" thick steel plate is welded to double top rail – provides maximum protection.

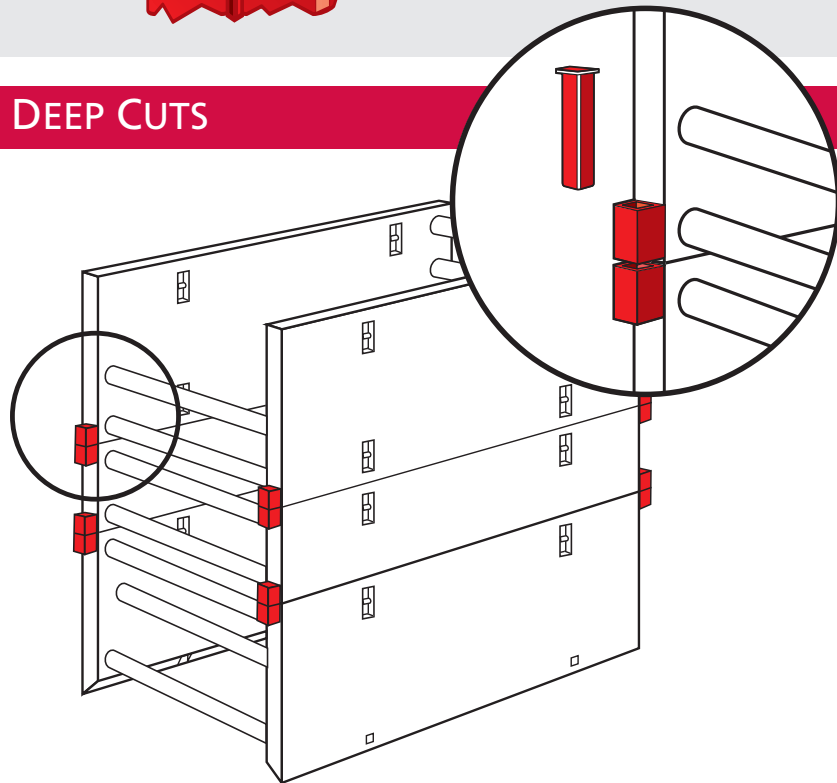
Double tube end posts at front and rear protect from bucket damage.

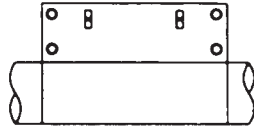
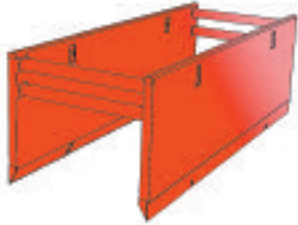
Extra heavy 3/4" wall collars reduce deformation and enlargement of pin holes.



STACKING POCKETS FOR DEEP CUTS

PRO-TEC shield sections can be equipped with stacking pockets to connect shields vertically and restrict lateral movement. All shield models are available as stack sections in 4, 6, 8, or 10-ft. heights to allow multiple stacking.

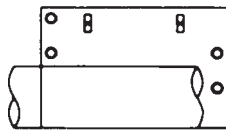
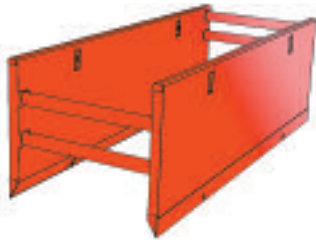




4-PIPE SPREADER SYSTEM

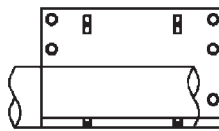
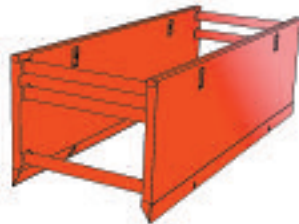
4 - PIPE REPAIR

Widely used for jobs involving pipe that must be straddled. Maximum pipe clearance at both ends of shield.



4 - PIPE PULL

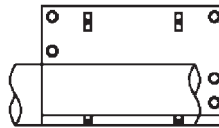
Front spreaders are centered to allow excavator boom clearance. Rear spreaders provide maximum pipe clearance. Recommended for 16' to 20' long shields.



5-PIPE SPREADER SYSTEM

5 - PIPE REPAIR

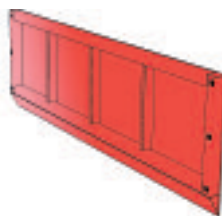
For maximum clearance at both ends, lower spreader pipe can be omitted. For added rigidity, 5th spreader pipe is used.



5 - PIPE PULL

For maximum rigidity and stability, the 5-pipe pull spreader system is ideal. Recommended for 24' long shields and larger.

MUD PLATES



Pro-Tec Mud Plates, help keep soil and sand from inside the shield. Plates pin to sidewalls quickly and easily.

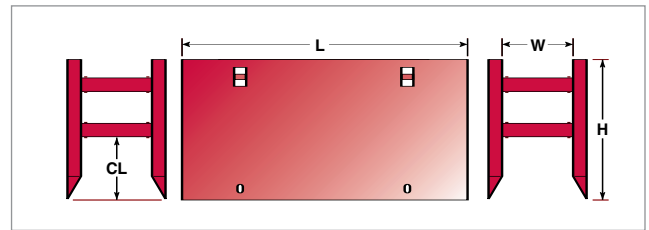
4", 6" AND 8" DOUBLE WALL SHIELDS

The ProSeries line of trench shields from PRO-TEC incorporates performance features that help deliver outstanding productivity and increased safety on the job.

ProSeries trench shields have the same rugged features in 4, 6, and 8 inch thick sidewalls to match your machine capacity and depth requirements.

- Industry's first, safer 4-point lifting system
- Industry's strongest knife edge for long life
- Full length double tube top rail provides built-in "I" beam strength
- Optional foam filling prevents soil and water build-up in sidewalls

- Recessed collars for extra strength and longevity
- Professional Engineer Certified to meet OSHA regulations
- Available with or without a knife edge
- Extended collars also available



Pro Series - 4" Double Wall Shields

Ht x Lgth (ft.)	Model	Weight (lbs.)	Pipe Clear (in.)	Shield Cap (PSF)*	Depth of Cut (ft.)		
					A	B	C
4 x 10	PRO 4-410 D	2920	21	3000	120	67	50
4 x 12	PRO 4-412 D	3290	21	3000	120	67	50
4 x 16	PRO 4-416 D	4100	21	1840	74	40	30
4 x 20	PRO 4-420 D	4880	21	1130	45	25	19
4 x 24	PRO 4-424 D	5700	21	775	28	17	13
6 x 10	PRO 4-610 D	3750	41	3000	120	67	50
6 x 12	PRO 4-612 D	4340	41	3000	120	67	50
6 x 16	PRO 4-616 D	5440	41	1533	61	34	25
6 x 20	PRO 4-620 D	6600	41	1111	40	24	19
6 x 24	PRO 4-624 D	7800	41	791	28	17	13
8 x 10	PRO 4-810 D	4650	55	2393	96	53	40
8 x 12	PRO 4-812 D	5390	55	2011	80	45	34
8 x 16	PRO 4-816 D	6800	55	1533	61	34	25
8 x 20	PRO 4-820 D	8240	55	1113	40	24	19
8 x 24	PRO 4-824 D	9850	55	793	28	17	13
10 x 10	PRO 4-1010 D	5750	70	1723	66	38	29
10 x 12	PRO 4-1012 D	6640	70	1457	58	32	24
10 x 16	PRO 4-1016 D	8320	70	1124	44	25	19
10 x 20	PRO 4-1020 D	9990	70	924	36	21	16
10 x 24	PRO 4-1024 D	11820	70	791	29	17	13

Pro 6 Series 6" Double Wall Shields

Ht x Lgth (ft.)	Model	Weight (lbs)	Pipe Clear (in.)	Shield Cap (PSF)*	Depth of Cut (ft.)		
					A	B	C
4 x 16	PRO 6-416 D	4650	21	2500	100	55	42
4 x 20	PRO 6-420 D	5490	21	1545	60	34	25
4 x 24	PRO 6-424 D	6440	21	1050	40	23	18
4 x 26	PRO 6-426 D	6860	21	892	34	19	15
4 x 28	PRO 6-428 D	7320	21	769	29	17	13
6 x 16	PRO 6-616 D	6190	41	2200	88	49	36
6 x 20	PRO 6-620 D	7410	41	1500	60	33	25
6 x 24	PRO 6-624 D	8850	41	1066	41	23	18
6 x 26	PRO 6-626 D	9430	41	903	35	20	15
6 x 28	PRO 6-628 D	10100	41	776	30	17	13
8 x 16	PRO 6-816 D	7740	64	1882	73	41	31
8 x 20	PRO 6-820 D	9290	64	1528	58	33	25
8 x 24	PRO 6-824 D	11100	64	1068	41	23	18
8 x 26	PRO 6-826 D	11800	64	904	35	20	15
8 x 28	PRO 6-828 D	12660	64	777	30	17	13
10 x 16	PRO 6-1016 D	9900	85	1422	58	32	24
10 x 20	PRO 6-1020 D	12000	85	1218	48	27	20
10 x 24	PRO 6-1024 D	13920	85	1040	43	24	18
10 x 26	PRO 6-1026 D	14350	85	876	36	20	15
10 x 28	PRO 6-1028 D	15000	85	780	29	17	13

Other sizes available upon request



Pro 8 Series



Pro 4 Series



Pro 6 Series

Pro 8 Series 8" Double Wall Shields

Ht x Lgth (ft.)	Model	Weight (lbs)	Pipe Clear (in.)	Shield Cap (PSF)*	Depth of Cut (ft.)		
					A	B	C
4 x 16	PRO 8-416 D	5280	21	3000	120	67	50
4 x 20	PRO 8-420 D	6250	21	2117	83	47	35
4 x 24	PRO 8-424 D	7280	21	1426	55	31	24
4 x 28	PRO 8-428 D	8250	21	1034	40	23	17
4 x 30	PRO 8-430 D	8770	21	899	34	20	15
6 x 16	PRO 8-616 D	6990	41	3000	120	67	50
6 x 20	PRO 8-620 D	8350	41	2000	80	44	33
6 x 24	PRO 8-624 D	9790	41	1461	57	32	24
6 x 28	PRO 8-628 D	11150	41	1055	41	23	18
6 x 30	PRO 8-630 D	11990	41	915	35	20	15
8 x 16	PRO 8-816 D	8800	64	2520	100	56	42
8 x 20	PRO 8-820 D	10470	64	1800	72	40	30
8 x 24	PRO 8-824 D	12340	64	1463	57	32	24
8 x 28	PRO 8-828 D	14070	64	1057	41	23	18
8 x 30	PRO 8-830 D	15000	64	916	35	20	15
10 x 16	PRO 8-1016 D	11700	85	2083	83	46	35
10 x 20	PRO 8-1020 D	14830	85	1841	74	41	31
10 x 24	PRO 8-1024 D	15200	85	1254	50	28	21
10 x 26	PRO 8-1026 D	17100	85	1045	42	23	17
10 x 28	PRO 8-1028 D	18070	85	908	36	20	15

8" Schedule 80 Spreader Pipe Including Pins & Keepers

4 Pipe Spreader Sets

Model	Inside Width (in.)	Weight (lbs.)
H 4- 24	24	470
H 4- 30	30	560
H 4- 36	36	650
H 4- 42	42	740
H 4- 48	48	820
H 4- 60	60	1010
H 4- 72	72	1170
H 4- 84	84	1350
H 4- 96	96	1510
H 4- 108	108	1692
H 4- 120	120	1860
H 4- 132	132	2040
H 4- 144	144	2210

5 Pipe Spreader Sets

Model	Inside Width (in.)	Weight (lbs.)
H 5- 24	24	590
H 5- 30	30	690
H 5- 36	36	800
H 5- 42	42	910
H 5- 48	48	1020
H 5- 60	60	1240
H 5- 72	72	1450
H 5- 84	84	1670
H 5- 96	96	1890
H 5- 108	108	2110
H 5- 120	120	2320
H 5- 132	132	2540
H 5- 144	144	2760

*PSF (pounds per square foot) ratings indicate maximum shield capacities. Depths are based on A, B, C, soil types as described in OSHA's 29 CFR Part 1926 Subpart P, October 31, 1989 with Type A not exceeding 25 PSF per foot of depth, Type B not exceeding 45 PSF per foot of depth and Type C not exceeding 60 PSF per foot of depth. Determine actual soil pressures and consult Manufacturers Tabulated Data prior to each use.

HEAVY DUTY 6" AND 8" DOUBLE WALL SHIELDS

Pro-Tec's Pro HD Series, in 6" and 8" sidewalls, provides maximum durability and depth. The Pro HD Series will handle your toughest jobs with ease.

- Designed and engineered to superior strength standards
- Manufactured with stronger, high tensile steel plate
- Available with Extra Heavy Duty spreader systems
- Stackable design
- Full length double tube top rail provides built-in "I" beam strength
- Strongest knife edge in the industry
- Professional Engineer Certified to OSHA requirements
- Available with or without a knife edge



Pro HD Series - Heavy Duty 6" Double Wall Shields

Ht x Lgth (ft.)	Model	Side Wall Thickness	Weight (lbs.)	Pipe Clear (in.)	Shield Cap (PSF)*	Depth of Cut (ft.)		
						A	B	C
8 x 24	Pro HD6 - 824	6"	13100	64	1500	60	33	25
8 x 28	Pro HD6 - 828	6"	14700	64	1058	42	24	18
10 x 16	Pro HD6 - 1016	6"	11200	85	1551	62	34	26
10 x 20	Pro HD6 - 1020	6"	14151	85	2010	80	45	34
10 x 24	Pro HD6 - 1024	6"	18007	85	1481	59	33	25

Pro HD Series - Heavy Duty 8" Double Wall Shields

Ht x Lgth (ft.)	Model	Side Wall Thickness	Weight (lbs.)	Pipe Clear (in.)	Shield Cap (PSF)*	Depth of Cut (ft.)		
						A	B	C
8 x 20	Pro HD8 - 820	8"	11180	64	2396	96	53	40
8 x 24	Pro HD8 - 824	8"	15870	64	1902	76	42	32
8 x 28	Pro HD8 - 828	8"	23130	64	1800	72	40	30
8 x 30	Pro HD8 - 830	8"	23250	64	1500	60	33	25
8 x 32	Pro HD8 - 832	8"	28650	64	1500	60	33	25
10 x 20	Pro HD8 - 1020	8"	16600	85	2120	85	47	35
10 x 24	Pro HD8 - 1024	8"	18470	85	1879	75	42	31
10 x 28	Pro HD8 - 1028	8"	26000	85	1800	72	40	30
10 x 30	Pro HD8 - 1030	8"	29380	85	1500	60	33	25
10 x 32	Pro HD8 - 1032	8"	30560	85	1488	60	33	25

Other model sizes available upon request

10" Schedule 80 Spreader Pipe Including Pins & Keepers

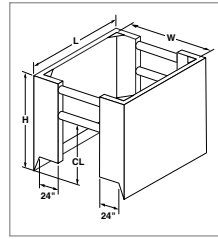
4 Pipe Spreader Sets			5 Pipe Spreader Sets		
Model	Inside Width (in.)	Weight (lbs.)	Model	Inside Width (in.)	Weight (lbs.)
XXH 4-24	24	850	XXH 5-24	24	1065
XXH 4-30	30	1030	XXH 5-30	30	1285
XXH 4-36	36	1210	XXH 5-36	36	1510
XXH 4-42	42	1385	XXH 5-42	42	1735
XXH 4-48	48	1565	XXH 5-48	48	1955
XXH 4-60	60	1920	XXH 5-60	60	2400
XXH 4-72	72	2280	XXH 5-72	72	2850
XXH 4-84	84	2640	XXH 5-84	84	3295
XXH 4-96	96	2990	XXH 5-96	96	3740
XXH 4-108	108	3350	XXH 5-108	108	4185
XXH 4-120	120	3705	XXH 5-120	120	4630
XXH 4-132	132	4065	XXH 5-132	132	5080
XXH 4-144	144	4420	XXH 5-144	144	5525

*PSF (pounds per square foot) ratings indicate maximum shield capacities. Depths are based on A, B, C, soil types as described in OSHA's 29 CFR Part 1926 Subpart P, October 31, 1989 with Type A not exceeding 25 PSF per foot of depth, Type B not exceeding 45 PSF per foot of depth and Type C not exceeding 60 PSF per foot of depth. Determine actual soil pressures and consult Manufacturers Tabulated Data prior to each use.

4" SINGLE AND DOUBLE WALL

Specially designed manhole shields enables your job to progress smoothly and safely. Many sizes available to meet your requirements.

- Designed and engineered to superior strength standards
- Manhole shields are constructed with the same rugged design and materials used on the ProSeries line
- Adjustable and stackable
- Professional Engineer Certified to OSHA requirements
- Optional replaceable cutouts



Manhole Shields - with Wings and 5" Schedule 80 Spreader Pipe

Ht x Lgth x Wd (ft.)	Model	Wall	Weight (lbs.)	Pipe Clear (in) (PSF)*	Depth of Cut (ft.)			
					A	B	C	
4 X 8 X 8	MAN4-48S	4" Single	2700	24	1800	72	40	30
4 X 10 X 10	MAN4-410S	4" Single	3000	24	1380	55	31	23
8 X 8 X 8	MAN4-88S	4" Single	4200	48	1140	46	25	19
8 X 10 X 10	MAN4-810S	4" Single	4900	48	780	31	17	13
8 X 12 X 12	MAN4-812S	4" Single	5600	48	600	24	13	10
<hr/>								
4 X 8 X 8	MAN4-48D	4" Double	3100	24	3000	120	67	50
4 X 10 X 10	MAN4-410D	4" Double	3600	24	3000	120	67	50
4 X 12 X 12	MAN4-412D	4" Double	4200	24	2100	84	47	35
8 X 8 X 8	MAN4-88D	4" Double	4990	48	2400	96	53	40
8 X 10 X 10	MAN4-810D	4" Double	5890	48	2100	84	47	35
8 X 12 X 12	MAN4-812D	4" Double	6750	48	1680	67	37	28
8 X 14 X 14	MAN4-814D	4" Double	7700	48	1500	60	33	25

*PSF (pounds per square foot) ratings indicate maximum shield capacities. Depths are based on A, B, C, soil types as described in OSHA's 29 CFR Part 1926 Subpart P, October 31, 1989 with Type A not exceeding 25 PSF per foot of depth, Type B not exceeding 45 PSF per foot of depth and Type C not exceeding 60 PSF per foot of depth. Determine actual soil pressures and consult Manufacturers Tabulated Data prior to each use.

OCTAGON MANHOLE

The Octagon Manhole Shield (OMH) combines the strength and durability of a Pro-Tec Shield with safety and security of a lightweight 4-sided shield.

- Ideal for light-duty excavators
- Single wall design allows depths up to 30'
- Stackable
- Optional replaceable trapezoidal cutouts
- Professional Engineer Certified to OSHA requirements
- Unique shape allows potential of 3 cubic yards of fill savings



Model	Height	Length	Width	Weight (LBS)
OMH-48	4'	8'	8'	2,450
OMH-410	4'	10'	10'	3,160
OMH-412	4'	12'	12'	4,095
OMH-68	6'	8'	8'	3,500
OMH-610	6'	10'	10'	4,485
OMH-88	8'	8'	8'	4,655
OMH-810	8'	10'	10'	5,255
OMH-412	8'	12'	12'	7,830

4 SIDED MANHOLES

- 4-sided shields with T-connection cutouts for repair and maintenance
- Professional Engineer Certified to OSHA requirements
- Through wall lifting lugs
- Wide range of sizes and styles to suit job needs

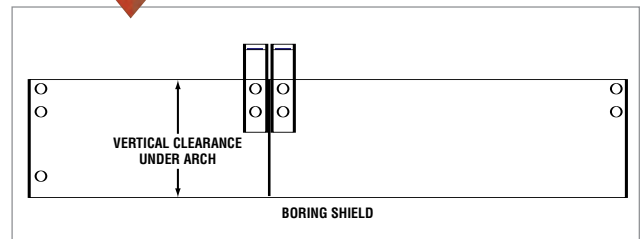
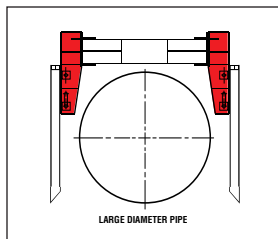


The PRO-TEC High Clearance Arch is designed to allow clearance for large-diameter pipe installation, boring pits, and other applications where up to 10 feet of vertical clearance is needed.

- Pins onto new or existing shield quickly and easily
- Full range of bolt-on extensions provides up to 22 feet of width adjustment to handle a wide variety of jobs
- Allows 96 inches of vertical clearance when used with 8 ft. high shields
- Allows 120 inches of vertical clearance when used on 10 ft. high shields
- Professional Engineer Certified to OSHA requirements
- Custom designs available to meet any vertical clearance requirements



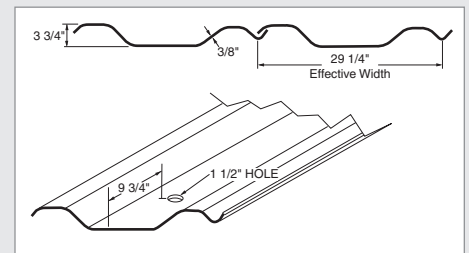
Model	Length	Weight (lbs.)
HC-ARCH ARCH LEGS (36")	2880	
EX - 12	1 EXTENSION	660
EX - 24	2 EXTENSION	820
EX - 36	3 EXTENSION	980
EX - 48	4 EXTENSION	1180
EX - 60	5 EXTENSION	1390
EX - 72	6 EXTENSION	1500
EX - 84	7 EXTENSION	1660
EX - 96	8 EXTENSION	1820
EX - 108	9 EXTENSION	1960
EX - 120	10 EXTENSION	2080
EX - 144	12 EXTENSION	2390
EX - 180	15 EXTENSION	2880
EX - 204	17 EXTENSION	3190



STEEL OVERLAP SHEETING

Heavy duty overlap sheeting designed for shoring and bulkheading.

- Strong, durable high-strength steel sheet
- Ideal for use as shoring and bulkheading ends of trench shields or anywhere the locking sheets are not required
- Overlap design allows easy installation with less damage
- 30-in. wide and 3/8-in. thick panels
- Available 12 ft. to 20 ft. long



Engineering Data	
Area	A = 13.32 in ²
Moment of Inertia (Per Sheet)	I = 24.45 in ⁴
Section Modulus (Per Sheet)	S = 12.83 in ³
Radius of Gyration (Per Sheet)	R = 1.355 in
Yield Strength	Fy = 50,000#/in ²

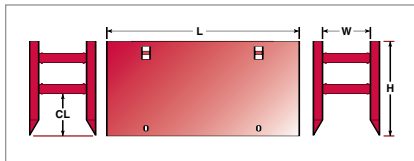
Consult registered professional engineering for site specific design prior to use.

LIGHTWEIGHT 3" SHIELDS

The PAL 3 Series is available in single and double wall 3" models.

The 3" Series shields can be handled easily by a loader/ backhoe.

- Industry's first, safer 4-point lifting system
- Industry's strongest knife edge for long life
- Recessed collars for extra strength and longevity
- Spreader are available in 4" and 5" sizes
- Professional Engineer Certified to meet OSHA requirements
- Optional cut-outs for T connections.
- End panels for 3 or 4-sided applications
- Extended collars also available



4" Schedule 40 Pipe Including Pins & Keepers

4 Pipe Spreader Sets

Model	Inside Width (in.)	Weight (lbs.)
L 4- 24	24	140
L 4- 30	30	170
L 4- 36	36	190
L 4- 42	42	210
L 4- 48	48	230
L 4- 60	60	270
L 4- 72	72	320
L 4- 84	84	360
L 4- 96	96	400
L 4- 108	108	450
L 4- 120	120	490
L 4- 144	144	580

5" Schedule 40 Pipe Including Pins & Keepers

4 Pipe Spreader Sets

Model	Inside Width (in.)	Weight (lbs.)
M 4- 24	24	220
M 4- 30	30	270
M 4- 36	36	310
M 4- 42	42	350
M 4- 48	48	390
M 4- 60	60	470
M 4- 72	72	560
M 4- 84	84	640
M 4- 96	96	730
M 4- 108	108	810
M 4- 120	120	890
M 4- 144	144	1100

*PSF (pounds per square foot) ratings indicate maximum shield capacities. Depths are based on A, B, C, soil types as described in OSHA's 29 CFR Part 1926 Subpart P, October 31, 1989 with Type A not exceeding 25 PSF per foot of depth, Type B not exceeding 45 PSF per foot of depth and Type C not exceeding 60 PSF per foot of depth. Determine actual soil pressures and consult Manufacturers Tabulated Data prior to each use.

PAL Series - 3" Single Wall Shields

Ht x Lgth (ft.)	Model	Weight (lbs.)	Pipe Clear (in.)	Shield Cap (PSF)*	Depth of Cut (ft.)		
					A	B	C
4 x 4	PAL 3 - 44 S	790	24	3000	120	66	50
4 x 6	PAL 3 - 46 S	1050	24	1851	73	41	31
4 x 8	PAL 3 - 48 S	1250	24	1009	39	22	17
4 x 10	PAL 3 - 410 S	1490	24	647	24	14	11
4 X12	PAL 3 - 412 S	1790	24	500	19	11	8
6 x 4	PAL 3 - 64 S	990	36	1380	55	30	23
6 x 6	PAL 3 - 66 S	1290	36	960	38	21	16
6 x 8	PAL 3 - 68 S	1590	36	770	27	16	13
6 x 10	PAL 3 - 610 S	1990	36	590	22	13	10
6 x 12	PAL 3 - 612 S	2350	36	500	19	11	8
8 x 4	PAL 3 - 84 S	1350	36	1500	60	33	25
8 x 6	PAL 3 - 86 S	1700	36	1020	40	23	17
8 x 8	PAL 3 - 88 S	1990	36	840	34	19	14
8 x 10	PAL 3 - 810 S	2750	36	660	26	15	11

PAL Series - 3" Double Wall Shields

Ht x Lgth (ft.)	Model	Weight (lbs.)	Pipe Clear (in.)	Shield Cap (PSF)*	Depth of Cut (ft.)		
					A	B	C
4 x 6	PAL 3 - 46 D	1170	24	3000	120	66	50
4 x 8	PAL 3 - 48 D	1460	24	2830	112	62	47
4 x 10	PAL 3 - 410 D	1740	24	1770	69	39	29
4 x 12	PAL 3 - 412 D	2120	24	1080	43	24	18
4 x 16	PAL 3 - 416 D	2370	24	680	27	15	11
6 x 6	PAL 3 - 66 D	1630	36	3000	120	66	50
6 x 8	PAL 3 - 68 D	2060	36	2790	110	62	46
6 x 10	PAL 3 - 610 D	2510	36	1500	60	33	25
6 x 12	PAL 3 - 612 D	2960	36	1080	43	24	18
6 x 16	PAL 3 - 616 D	3700	36	680	27	15	11
8 x 6	PAL 3 - 86 D	2100	48	2040	81	45	34
8 x 8	PAL 3 - 88 D	2590	48	1740	69	38	29
8 x 10	PAL 3 - 810 D	3220	48	1320	53	29	22
8 x 12	PAL 3 - 812 D	3800	48	1080	43	24	18
8 x 16	PAL 3 - 816 D	4850	48	680	27	15	11

LIGHTWEIGHT 4" DOUBLE WALL STEEL TRENCH SHIELD

We combined lightweight design integrity into a 4-inch double wall steel trench shield that delivers superior depth ratings with less overall weight.

- Ideal for handling by small excavators
- Light to medium duty applications
- Competitively priced
- Spreaders are available in either 5-inch or 8-inch diameter schedule 80 pipe
- Industry's first, safer 4-point lifting system
- Professional Engineer certified to meet OSHA requirements
- Industry's strongest knife edge for long life
- Up to 48 inches of vertical pipe clearance

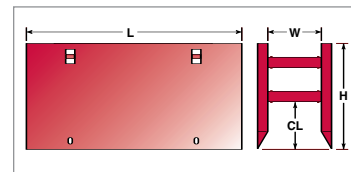
- Recessed collars inserted between twin end posts for extra strength
- Full length double tube top rail provides built-in "I" beam strength
- Available with or without a knife edge
- Extended collars also available

Specifically designed for:

- Municipal utility installation, maintenance and repair
- Water, sewer, gas, fiber optics, and cable installation and repair

Options:

- Cutouts for T connections
- End panels for 3- or 4-sided models
- Custom designs to your specifications



Ht x Lgth (ft.)	Model	Shield Weight	Shield Weight	Pipe Clear (in.)	Shield Cap (PSF)*	Depth of Cut (ft.)		
		4" Collars	7" Collars			A	B	C
4 x 8	Pal4 - 48 D	1800	2100	24	2400	96	53	40
4 x 10	Pal4 - 410 D	2190	2490	24	2100	84	47	35
4 x 12	Pal4 - 412 D	2490	2790	24	1740	70	39	29
4 x 14	Pal4 - 414 D	3000	3300	24	1500	60	33	25
4 x 16	Pal4 - 416 D	3200	3500	24	1140	46	25	19
4 x 20	Pal4 - 420 D	3850	4150	24	780	31	17	13
4 x 24	Pal4 - 424 D	N/A	5120	24	540	22	12	9
6 x 8	Pal4 - 68 D	2490	2790	36	2400	96	53	40
6 x 10	Pal4 - 610 D	2950	3250	36	2100	84	47	35
6 x 12	Pal4 - 612 D	3390	3690	36	1740	70	39	29
6 x 14	Pal4 - 614 D	3850	4150	36	1500	60	33	25
6 x 16	Pal4 - 616 D	4300	4600	36	1140	46	25	19
6 x 20	Pal4 - 620 D	5250	5550	36	780	31	17	13
6 x 24	Pal4 - 624 D	N/A	6530	36	540	22	12	9
8 x 8	Pal4 - 88 D	3100	3400	48	2400	96	53	40
8 x 10	Pal4 - 810 D	3650	3950	48	2100	84	47	35
8 x 12	Pal4 - 812 D	4250	4550	48	1740	70	39	29
8 x 14	Pal4 - 814 D	4800	5100	48	1500	60	33	25
8 x 16	Pal4 - 816 D	5400	5700	48	1140	46	25	19
8 x 20	Pal4 - 820 D	6750	7050	48	780	31	17	13
8 x 24	Pal4 - 824 D	N/A	8380	48	540	22	12	9

Note: Pal 4 is not compatible with High Clearance Arch.

5" Schedule 80 Spreader Pipe Including Pins & Keepers

4 Pipe Spreader Sets			5 Pipe Spreader Sets		
Model	Inside Width (in.)	Weight (lbs.)	Model	Inside Width (in.)	Weight (lbs.)
M4- 24	24	220	M5- 24	24	280
M4- 30	30	270	M5- 30	30	330
M4- 36	36	310	M5- 36	36	390
M4- 42	42	350	M5- 42	42	440
M4- 48	48	390	M5- 48	48	490
M4- 60	60	470	M5- 60	60	590
M4- 72	72	560	M5- 72	72	700
M4- 84	84	640	M5- 84	84	800
M4- 96	96	730	M5- 96	96	910
M4-108	108	810	M5-108	108	1010
M4-120	120	890	M5-120	120	1120
M4-132	132	1000	M5-132	132	1250
M4-144	144	1100	M5-144	144	1375

8" Schedule 80 Spreader Pipe Including Pins & Keepers

4 Pipe Spreader Sets			5 Pipe Spreader Sets		
Model	Inside Width (in.)	Weight (lbs.)	Model	Inside Width (in.)	Weight (lbs.)
H4- 24	24	470	H5- 24	24	590
H4- 30	30	560	H5- 30	30	690
H4- 36	36	650	H5- 36	36	800
H4- 42	42	740	H5- 42	42	910
H4- 48	48	820	H5- 48	48	1020
H4- 60	60	1010	H5- 60	60	1240
H4- 72	72	1170	H5- 72	72	1450
H4- 84	84	1350	H5- 84	84	1670
H4- 96	96	1510	H5- 96	96	1890
H4-108	108	1692	H5-108	108	2110
H4-120	120	1860	H5-120	120	2320
H4-132	132	2040	H5-132	132	2540
H4-144	144	2210	H5-144	144	2760

The ATS Series lightweight aluminum trench shields are pre-fabricated to standard sizes using lightweight, foam filled panels.

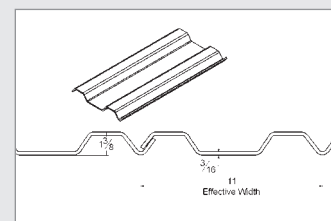
- Smooth 2-3/4" thick wall design
- Telescoping spreader sets for varying trench widths
- Standard foam filling prevents dirt and water build-up
- Extra lightweight for tractor loader/backhoe handling
- Professional Engineer Certified to OSHA requirements
- Ideal for municipalities and utility contractors
- Standard lifting eyes
- Industry's first, safer 4-point lifting system
- Optional end panels and cutouts available
- Optional knife edge
- Custom sizes available



ALUMINUM OVERLAP SHEETING

Light weight overlap sheeting. Ideal for bulkheading with other aluminum products

- Easily transported in pick-up
- Overlap design allows easy installation
- 11 in. effective width
- Available 5-ft. to 12-ft. long



Aluminum Overlap Sheeting

Model	Length (ft)	Weight (lbs.)
AOLS-60	5	16
AOLS-72	6	19
AOLS-96	8	25
AOLS-120	10	31
AOLS-144	12	37

ATS Series - Aluminum Trench Shields

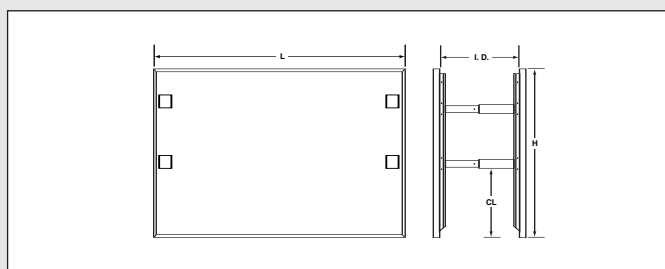
Ht x Lgth (ft.)	Model	Weight (lbs.)	Pipe Clear (in.)	Shield Cap (PSF)*	Depth of Cut (ft.)		
					A	B	C
4 x 6	ATS - 46	420	12	1960	78	44	21
4 x 8	ATS - 48	510	12	1470	59	33	16
4 x 10	ATS - 410	600	12	1130	45	25	13
4 x 12	ATS - 412	700	12	764	31	17	11
4 x 14	ATS - 414	790	12	555	22	12	9
4 x 16	ATS - 416	880	12	421	17	10	7
6 x 6	ATS - 66	600	30	1264	51	28	21
6 x 8	ATS - 68	730	30	960	38	21	16
6 x 10	ATS - 610	870	30	777	31	17	13
6 x 12	ATS - 612	1010	30	655	26	15	11
6 x 14	ATS - 614	1140	30	556	22	12	9
6 x 16	ATS - 616	1280	30	427	17	10	7
8 x 6	ATS - 86	780	30	1264	51	28	21
8 x 8	ATS - 88	960	30	960	38	21	16
8 x 10	ATS - 810	1140	30	777	31	17	13
8 x 12	ATS - 812	1320	30	655	26	15	11
8 x 14	ATS - 814	1500	30	555	22	12	9
8 x 16	ATS - 816	1700	30	427	17	10	7

*PSF (pounds per square foot) ratings indicate maximum shield capacities. Depths are based on A, B, C, soil types as described in OSHA's 29 CFR Part 1926 Subpart P, October 31, 1989 with Type A not exceeding 25 PSF per foot of depth, Type B not exceeding 45 PSF per foot of depth and Type C not exceeding 60 PSF per foot of depth. Determine actual soil pressures and consult Manufacturers Tabulated Data prior to each use.

Adjustable Spreader Sets (Inside Panel Dimensions)

Model (Sets of 4)	Weight (lbs.)	Adjustment
TS 4 - 1826	108	18" to 26"
TS 4 - 2334	128	23" to 34"
TS 4 - 2844	153	28" to 44"
TS 4 - 3454	183	34" to 54"
TS 4 - 4266	223	42" to 66"
TS 4 - 5288	273	52" to 88"

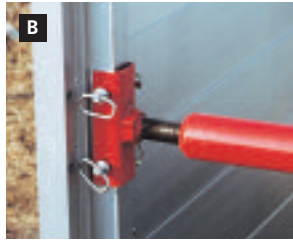
Optional Bulkhead Guide
Can be used with Aluminum Overlap Sheets



A ModSeries trench shield components stack flat, easily fit in a pick-up truck or van.



B Exclusive corner end-post design accepts either panels or adjustable spreaders, lets you build a 2, 3, or 4 sided shield quickly.



C Foam-filled, tongue and groove panels keep dirt and moisture out, and self align during assembly.



D Panel ends are flanged for extra durability, allows easy handling.



■ Professional Engineer certified to comply with OSHA standards.



E Lifting eyes provide convenient pick point



F Bottom panels may be removed to allow for cross utilities.

Quick & Easy Assembly



Lightweight 2-foot high aluminum panels are easily unloaded from a pick-up truck by hand without the use of machines. No lifting equipment needed.

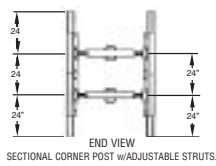


To begin assembling shield, two corner end-posts are pinned to side panels and rear panel.



Side and rear panels are stacked to desired height.

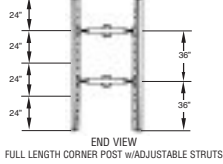
Sectional Corner Post



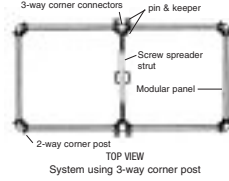
Bottom Panels Omitted



Full Length Corner Post

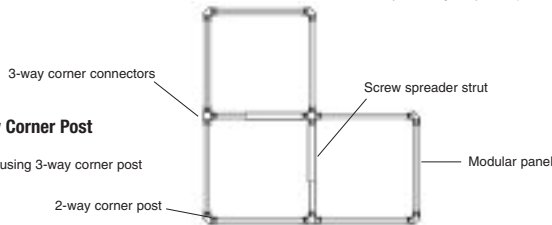


3-Way Corner Post



4-Way Corner Post

TOP VIEW
System using 3-way corner post



Corner Connectors (2-way)

Model	Weight (lbs.)	Length
MC 24	19	24"
MC 48	38	48"
MC 72	56	72"
MC 96	75	96"
MC 120	94	120"

Corner Connectors (3-way)

Model	Weight (lbs.)	Length
MC 3-24	25	24"
MC 3-48	51	48"
MC 3-72	76	72"
MC 3-96	101	96"
MC 3-120	127	120"

Corner Connectors (4-way)

Model	Weight (lbs.)	Length
MC 4-24	33	24"
MC 4-48	66	48"
MC 4-72	100	72"
MC 4-96	132	96"
MC 4-120	170	120"

Panels – 2-Sided Depth Chart

Model Ht x Lgth (ft.)	Weight (lbs.)	Shield Cap (PSF)*	Depth of Cut (ft.)		
			A	B	C
MPS 2 x 3	38	3000	120	66	50
MPS 2 x 4	49	3000	120	66	50
MPS 2 x 6	70	2828	113	63	47
MPS 2 x 8	92	1487	59	33	25
MPS 2 x 10	113	919	36	21	15
MPS 2 x 12	135	627	25	14	11
MPS 2 x 14	156	457	18	10	8

Panels – 3 and 4-Sided Depth Chart

Width x Length (ft.)	Shield Capacity (PSF)*	Depth of Cut (ft.)		
		A	B	C
4 x 4	3000	120	67	50
4 x 6	2524	100	56	42
4 x 8	1260	50	28	21
4 x 10	780	31	17	13
4 x 12	540	22	12	9
6 x 6	2524	100	56	42
6 x 8	1260	50	28	21
6 x 10	780	31	17	13
6 x 12	540	22	12	9
8 x 8	1288	51	29	21
8 x 10	780	31	17	13
8 x 12	540	22	12	9
10 x 10	733	30	17	13
10 x 12	540	22	12	9
12 x 12	512	20	11	9
14 x 14	363	14	8	6

Adjustable Spreaders (Inside Panel Dimensions)

Model	Weight (lbs.)	Length
MAS 23	27	24" to 36"
MAS 35	37	36" to 60"
MAS 57	46	60" to 84"
MAS 79	55	84" to 108"

*PSF (pounds per square foot) ratings indicate maximum shield capacities. Depths are based on A, B, C, soil types as described in OSHA's 29 CFR Part 1926 Subpart P, October 31, 1989 with Type A not exceeding 25 PSF per foot of depth, Type B not exceeding 45 PSF per foot of depth and Type C not exceeding 60 PSF per foot of depth. Determine actual soil pressures and consult Manufacturers Tabulated Data prior to each use.

ModSeries Trench Shields are easily handled by a rubber-tired backhoe loader.



Corner end-posts are pinned in place.



Adjustable spreaders pin securely in place to complete a 3-sided shield.



PRO-TEC Stone-Savers reduce bedding material loss

PRO-TEC Stone Saver bedding material containers are designed with aggregate conservation in mind. With the Stone Saver, you confine bedding material to the container, minimizing loss of material. You also reduce traffic congestion and safety problems associated with front-end loader dumping

from the edge of the trench. Bottom and ends are formed from one continuous 1/2-in. steel plate. Weld seams and sharp edges are eliminated. Dragging in either direction is easier because both front and back bottom edges are rounded.



steel plate. Weld seams and sharp edges are



Above Stone Saver shown with option extension.

Standard Stone Saver

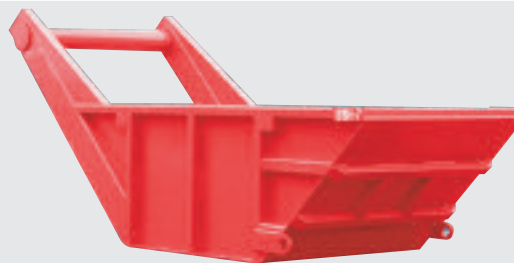
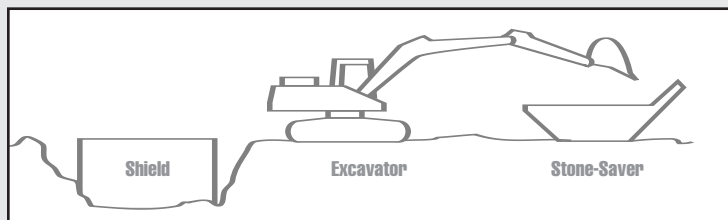
- Bottom and ends formed from one continuous 1/2" plate - eliminates edges
- 1/4" thick side plates
- Pulling eyes for towing
- 8" dia. x 1/2" thick pipe push/pull bar
- Heavy angle reinforcement at point of bucket contact
- Rectangular tube side stiffeners eliminate flanges
- Four lifting pockets for loading and unloading

Stone Savers – Standard

Model	Height (in.)	Inside Width (in.)	Inside Length (in.)	Weight (lbs.)
SS - 3	36	48	103	3100
SS - 5	36	63	116	4100
SS - 7	48	63	143	5000
SS - 9	48	63	164	5400
SS - 12	48	75	183	6400
SS - 15	48	75	222	7200

Heavy Duty Stone Saver

- Ideal for large excavators and severe conditions. Same features as standard saver with the following additions:
- Heavy duty gusseting on push/pull arm
- 3/8" thick side plates
- Full length inside wear bars for durability
- Ends reinforced with tube stiffeners



Stone Savers – Heavy Duty

Model	Height (in.)	Inside Width (in.)	Inside Length (in.)	Weight (lbs.)
SSH - 5	36	63	116	4830
SSH - 7	48	63	143	6160
SSH - 9	48	63	164	6670
SSH - 12*	48	75	183	7840
SSH - 15*	48	75	222	8740
SSH - 18*	60	81	219	9640
SSH - 20*	60	81	239	10440

*Heavy duty Stone Savers of 12 cubic yards or larger include an 8" dia. x .718" thick push/pull bar



P.O. Box 130 • 1298 Lipsey Dr. • Charlotte, MI 48813 • Phone: (517) 541-0303 or 1-800-292-1225
 Fax: (517) 541-0329 • www.pro-tecequipment.com